

2022 ANNUAL REPORT

THE VICTORY ELECTRIC
COOPERATIVE ASSN., INC.



Ballot Enclosed
for districts
2, 4, 6, 10



SCHEDULE OF EVENTS

- 5:30 p.m. Registration begins**
- 6 p.m. Dinner served to the first 1,000 people: BBQ brisket or pulled pork, baked beans, chips and cookie
- 7 p.m.
 - Business meeting
 - Announce results of trustee elections
 - Brief cooperative reports
 - Adjourn the meeting

The Victory Electric Cooperative Association, Inc., is proud to serve the members in our corner of southwest Kansas. We are committed to helping our communities grow and prosper. To promote economic growth and expansion, Victory Electric is investing in infrastructure and technology to accommodate the growth.

Installing a state-of-the-art automated metering infrastructure and incorporating distribution automation technology to increase energy delivery efficiency are just two of the newest technologies Victory Electric has embraced to increase efficiency and save our members money.

The board of trustees, CEO and employees of Victory Electric invite you to join us for dinner and have a good time at the annual meeting on Tuesday, April 15, 2014, at the Western State Bank Expo Center (located at 11333 US Highway 283 in Dodge City).

***A registration gift will be given to the first 600 residential members who register at the annual meeting. Bring the card on the back of this booklet to redeem your gift. Limit one gift per residential member.*

WHO WE ARE

Victory Electric is your local electric cooperative. We pride ourselves in the service we provide to our members. Purchasing electric power from Victory Electric gives you membership in the cooperative and, as a member, you have a voting membership.

We invite you to exercise your membership rights and join us at our annual meeting on April 15, eat a great meal, and participate in the meeting.

Victory Electric was chartered June 1, 1945, and the first lines were energized in August 1947. Our cooperative's name comes from the recognition of the U.S. and Allied forces' victory at the end of World War II.

In the early days of the cooperative, Victory Electric served parts of nine counties with just over 300 miles of transmission and distribution line.

Today, Victory Electric is headquartered in Dodge City in Ford County. We have 87 employees and provide service to 19,544 meters with 2,789.26 miles of transmission

and distribution line in southwest Kansas. The majority of our service area is within the three counties of Ford, Gray and Hodgeman. The other counties partially served are Clark, Edwards, Finney, Haskell, Kiowa and Meade.

Victory Electric purchases electricity from three generation and transmission cooperatives (G&Ts): Sunflower Electric Power Corporation and Mid-Kansas Electric Company, LLC, both based in Hays; and Kansas Electric Power Cooperative (KEPCo) in Topeka.

Our energy comes from a variety of resources including wind, coal, natural gas, hydroelectric, nuclear, black-start natural gas generators, and diesel peaking units. In addition, new coal, nuclear and wind generation projects are currently being considered. We are committed to developing generation capabilities in an environmentally responsible manner, while ensuring a reliable energy supply at a reasonable cost.

MISSION STATEMENT

The mission of Victory Electric is to provide a safe, reliable service at a competitive rate, provide economic development opportunities and services for our members, and to ensure the financial stability of the cooperative through the use of prudent business practices and the latest technology.

The Victory Electric Cooperative Association, Inc., is proud to serve the members in our corner of southwest Kansas. We are committed to helping our communities grow and prosper.





Employees of Victory Electric and their families participate in the Dodge City Days parade every July. Pictured are Magaly, Myrka and Maryah Morales.

OFFICIAL NOTICE OF THE ANNUAL MEETING OF THE MEMBERS

Notice is hereby given that the Annual Meeting of the Members of The Victory Electric Cooperative Association, Inc., for the year of 2013, will be held at the Western State Bank Expo Center, Dodge City, Kansas, on Tuesday, April 15, 2014, at 7 p.m. for the following purposes:

1. To hear, review and discuss the reports of officers and trustees.
2. To receive the report of the election results for trustees, one each from districts 2, 4, 6 and 10 for a three-year term.
3. To take action upon any and all other matters that may properly come before the meeting.

In connection with the election of the trustees, the following members have been nominated by the nomination committee appointed by the board pursuant to the bylaws:

- District 2: John Leis, 12548 108 Rd., Minneola, KS 67865
- District 4: Jim Imel, 12993 Wilburn Rd., Bucklin, KS 67834
- District 6: Kenny Wehkamp, 15907 G Rd., Cimarron, KS 67835
- District 10: Randy Quint, 1818 Barham, Dodge City, KS 67801

Members serving on the nominating committee are Greg Hainer, Kent Bartlett, James (Jim) Smiley, Ronnie Keeton, Tim Gleason, Nathan Ohman, Dean Harms and Robert (Bob) Hughes.

Pat Morse, Secretary-Treasurer

Dated this 7th day of March, 2014
The Victory Electric Cooperative Assn., Inc.

MINUTES OF THE NOMINATING COMMITTEE

The meeting of the nominating committee of The Victory Electric Cooperative Association, Inc., was held on Thursday, January 23, 2014, at 1 p.m. at the office of the cooperative on North 14th Avenue, Dodge City, Kansas.

The following members of the nominating committee were present: Greg Hainer, Kent Bartlett, James (Jim) Smiley, Ronnie Keeton, Tim Gleason, Nathan Ohman, Dean Harms and Robert (Bob) Hughes.

Shane Laws, CEO; Dave Snapp, attorney for Victory Electric; and Rae Jean Amy, executive assistant who recorded the minutes, were also present. Dave Snapp called the meeting to order at 1 p.m.

Thereupon, Snapp reviewed qualifications and eligibility requirements for election as a trustee, as set forth in the bylaws of the cooperative, to determine if each potential nominee was eligible for election based upon the information available and the bylaws of the cooperative.

Thereupon, motions duly made, voted on and carried, Hainer was elected as chairman of the nominating committee and inspector of elections. Chairman Hainer then took over the meeting and asked for nominations from districts 2, 4, 6 and 10.

Thereupon, motions duly made, seconded and adopted, the following persons were nominated to stand election as candidates for trustee of the cooperative for a three-year term:

John Leis, District 2; Jim Imel, District 4; Kenny Wehkamp, District 6; and Randy Quint, District 10.

There being no further business to come before the meeting of the nominating committee, the meeting was adjourned at 1:15 p.m.

Greg Hainer, Chairman

ATTEST: Pat Morse, Board Secretary

CULTURE STATEMENT

Victory Electric’s employees
and board of trustees
culture is based upon
integrity, honesty, loyalty
and accountability with
benevolence to each other
and our members. In respect
for ethnic diversity and a
moral obligation, our goals are
to cultivate and educate our
fellow employees and board
of trustees to better serve
ourselves and our members
with intellectual wisdom. Our
creed of fundamental beliefs
guides us to accomplish our
mission statement.



A MESSAGE FROM THE CEO



Shane Laws
CEO

I would like to extend a heartfelt “thank you” to the local citizens and members of Victory Electric for extending my family and me a warm welcome to the community and southwest Kansas. We truly feel blessed to have moved to such a wonderful community, and we have enjoyed meeting many new folks since arriving in October.

As the new CEO of Victory Electric, I am quickly adjusting and learning about the

issues facing electric utilities and cooperatives in Kansas. Victory Electric is committed to adhering to its mission statement and providing power to our members in a safe, reliable manner at a competitive rate. We take that commitment very seriously and are currently focusing on addressing several issues, including self-regulation, power costs and Environmental Protection Agency (EPA) regulations that directly affect our members and our rates.

Self-Regulation

Many public utilities, including cooperatives, are subject to the jurisdiction of the Kansas

Corporation Commission (KCC). The KCC has the authority over rates, rate setting, terms and conditions of service, and many other aspects of the electric utility industry. Recognizing that cooperatives are not-for-profit and have a member-elected board of trustees, the Kansas Legislature gave cooperatives the power to self-regulate in 1992. This gave electric cooperative members the right to vote whether they want the KCC to oversee rates or whether they want to self-regulate.

In 2000, members of Victory Electric voted to self-regulate on rate matters. In April 2007, Victory acquired part of the electric

assets of Aquila’s Kansas Electric Network. These new members remained under KCC jurisdiction, while native members were self-regulated. Victory Electric would like to unify the members by holding a vote to self-regulate our entire membership. A “yes” vote gives Victory Electric’s member-elected board of trustees the decision-making authority to self-regulate the electric rates for our members, a responsibility previously held by the KCC.

A vote for self-regulation would result in huge financial savings for Victory Electric. The cooperative pays an annual fee of approximately \$12,000 to KCC each year to be under KCC jurisdiction. A rate increase in 2010 for the KCC-regulated Mid-Kansas customers cost Victory \$215,074. In contrast, Victory Electric paid approximately \$23,274 in 2011 for a self-regulated rate case. Based on the rate cases described above, self-regulation resulted in an 89 percent savings to our members.

Victory Electric’s member-elected board of trustees is entrusted with making financial decisions, including rate changes and adjustments. They are members, too, so when rates are increased, their electric bills are affected just like yours and mine. To give you an idea of the responsibility of our board regarding self-regulation, the native members did not have a rate increase for 19 years from 1992 to 2011. Can you imagine if the price of gasoline, bread or other staples did not increase for 19 years? We feel electricity is still a great value.

Self-regulation will not eliminate all regulatory requirements for Victory Electric. We will continue to be subject to other state and federal environmental, safety, reliability and labor regulations, even after self-regulation. Certain functions will remain under KCC authority,

regardless of the members’ vote to self-regulate. The intent behind the vote for self-regulation is not about raising rates; it’s about the right to keep decisions about rates at home versus in Topeka. Our goal as a not-for-profit electric cooperative is always to provide power as close to cost as possible while maintaining reliability in a safe and effective manner.

Power Costs and the EPA

Victory Electric is constantly working to find ways to keep your power cost as low as possible while maintaining safety and reliability. One pressing issue Victory Electric and other cooperatives across Kansas and the nation is facing are the looming new air quality standards for power plants.

The EPA is handing down new regulations under the Clean Air Act that will directly affect the nation’s energy producers. The EPA’s proposed Greenhouse Gas (GHG) standards for fossil fuel power plants are based on carbon capture and sequestration (CCS) technology that is not commercially available for coal-fired plants, and implementing these regulations could cause plant closures and higher electricity rates for rural cooperative members.

In fact, in February at an investigations hearing on the Department of Energy’s (DOE) clean coal programs, DOE Deputy Assistant Secretary for Clean Coal, Dr. S. Julio Friedmann, testified that CCS technologies could drastically increase energy costs. Friedmann expressed that for first generation technologies, there would be “something like a 70 to 80 percent increase on the wholesale price of electricity.” He added, “It is in fact a substantial percentage increase in the cost of electricity, but in part, that’s because the current price of coal is so low.”

If officials from the DOE are admitting in federal hearings that CCS technology (that is not commercially available) is cost prohibitive, why is the EPA being allowed to move forward with these regulations? Victory Electric and our industry partners, on both a state and national level, will continue to fight to maintain a fair balance of keeping electricity costs manageable for our members while protecting the environment.

Commitment to Community

The growth and success of the communities we serve is important to Victory Electric, and we like to provide value-added benefits to our members. That’s why we send high school juniors to leadership camp and Washington, D.C., every summer to learn about history and government. Victory Electric coordinates a large health fair every year for our local communities. We also sponsor many community events such as the Parade of Lights and Chili Cook-off and the Pumpkin Painting and Carving Festival.

Most recently, we presented all Victory Electric members with a Co-op Connections Card. When presented at participating local businesses, members receive a discount. The card can be presented at local pharmacies to receive significant savings on prescriptions. The card also works at select national businesses and online.

We don’t participate in these activities simply because it’s nice to do or even the right thing to do. We do it because we remain loyal to our members, our neighbors and our home, and we have a mission to make life better for members in the areas we serve.



Local business owner, Ivonne Soto, offers a Co-op Connections Card discount at Dulce Landia. Dulce Landia is a candy and party supply store located in downtown Dodge City.

BRINGING VALUE TO MEMBERS

CO-OP CONNECTIONS CARD PROVIDES LOCAL AND NATIONAL DISCOUNTS TO MEMBERS

At Victory Electric, we are all about serving our members and our communities.

The cooperative's commitment to members goes beyond its mission to balance rates with safety, reliability, quality of service, and the financial strength of the cooperative. We're always looking for ways to provide value to our members and our community, especially during tough economic times. Victory Electric's Co-op Connections Card is a money-saving tool we're proud to provide to our membership.

"Victory Electric has offered the program to our members since August 2013, and is intended to give them everyday savings," said Micaela Morales, member relations coordinator at Victory. "We are actively recruiting more local businesses to offer deals that enhance and accompany the national discounts already provided."

The Co-op Connections Card program has proven successful at hundreds of other cooperatives across the nation, and Victory Electric wanted to provide the same value to our members.

The Co-op Connections Card program is a member discount program for Victory Electric members and members of Touchstone Energy electric co-ops throughout the nation. The program is unique to Touchstone Energy Cooperatives, being entirely free to co-op members with no contracts or hoops to jump.

Having a Co-op Connections Card provides many ways to save on everyday expenses, including hotel stays, rental cars, flowers, clothing and accessories, and even prescription drugs.

Victory is always working with local businesses to offer deals and discounts when using the Co-op Connections Card, and currently more than 20 local companies provide discounts. You can use your Co-

op Connections Card anywhere at the thousands of businesses across the country that accept the card and offer discounts. For a complete list of all participating businesses in our area, simply log on to our website at www.victoryelectric.net.

The card also gives you access to online savings at more than 95 national retailers like Barnes&Noble.com, Hertz rental cars, Best Western Hotels, and many more. You can find the complete list at www.connections.coop.

The program adds value to your membership by saving you money at the local and national businesses you use every day. One of the biggest benefits is the pharmacy discount. While it is not insurance, the discount can mean savings of 10 to 60 percent on prescription drugs. The logo and information on the back of the card is recognized at more than 60,000 national, regional and local pharmacies.

The pharmacy discount has been widely used by members of Touchstone Energy co-ops across the country, resulting in combined savings of nearly \$20 million on prescription drugs. Want

to know more about how you can save on your prescriptions? Log on to www.locateproviders.com to search for pharmacies in our area honoring the card. Use code 22203 as the group number under the "groups" login section. Next, enter your zip code.

Also, since the Co-op Connections Card is a program used all over the country, you can also save money on vacations and even business travel.

As a cooperative and member of Touchstone Energy,

Victory Electric adheres to four core values: integrity, accountability, innovation and commitment to our community. The Co-op Connections Card is one more way that we like to live up to those values and better serve you.

"Members should have received their Co-op Connections Card inside the *Kansas Country Living* magazine last August," Morales said. Members can also feel free to stop by Victory's office to get their cards at no additional charge. We're eager to answer any questions you may have about the card. Call Victory Electric at 620-227-2139 to find out more, or log on to www.victoryelectric.net.



PRESIDENT'S REPORT



Kenny Wehkamp
President





Cooperatives aren't like other businesses in our community. We're not focused on making a profit; at our core we exist to meet the needs of our members and our communities. As the president of the board of trustees,

I want to encourage you to approach your district trustee, or any trustee, if you have a concern or issue. They represent you and other members when making decisions for the co-op. Trustees are members of this cooperative, too., so they pay the same rates and receive the same service.

It's hard to predict the future, but one thing seems certain: government regulations are going to increase the cost of doing business and new regulations won't be the only culprit. Prices for fuel, materials and equipment will only continue to rise. Your board of trustees is committed to keeping you informed about policy change costs that will impact your electric bill.

Your board and cooperative employees are working to keep costs as low as possible. The board has a duty of care, a duty of concern, and a duty of responsibility to maintain the financial integrity of the cooperative to ensure members receive safe, affordable and reliable electric service.

CANDIDATES FOR THE VICTORY ELECTRIC BOARD OF TRUSTEES

DISTRICT 2	DISTRICT 4	DISTRICT 6	DISTRICT 10
<div><div>John Leis <i>Minneola, KS</i> <i>Incumbent</i></div><div>I have been proud to serve on the Victory Electric board of trustees for the past nine years. Victory Electric has experienced many changes during the past few years with the implementation of various new technologies designed to save Victory members money and increase system efficiency. Victory Electric continues to be a community-minded leader, and I hope to be a part of the effort to promote the future growth and success of both our community and the cooperative. I will do my best to adhere to our mission statement of providing members with safe, reliable service at a competitive rate. I would like to thank the members of District 2 for your support over the years, and I would be grateful for the opportunity to continue to serve as your trustee.</div></div>	<div><div>Jim Imel <i>Bucklin, KS</i> <i>Incumbent</i></div><div>I am grateful for the opportunity to serve as a trustee of Victory Electric. In my time on the board, we have worked through many exciting challenges, and I would appreciate being a part of Victory's future growth and success. My time and experience serving on the Victory Electric board of trustees has been invaluable. I have gained extensive knowledge of cooperative business and finances that will be of benefit to the members of Victory Electric. I've also had the opportunity to diversify my knowledge of the electric industry by representing Victory Electric on the Sunflower board of directors. I am very thankful for my district members' support and input, and I am dedicated to facing any upcoming challenges at Victory Electric with increased knowledge and experience.</div></div>	<div><div>Kenny Wehkamp <i>Cimarron, KS</i> <i>Incumbent</i></div><div>I have been honored to serve and represent the members of Victory Electric on the board of trustees. I will continue to represent the members of Victory as I have in the past. I currently serve as president of Victory's board of trustees. I also serve as the delegate on the Mid-Kansas board, as well as an alternate delegate for the Sunflower Electric board. As a self-employed farmer, I am well versed in fiscal responsibility and business management, and I will continue to use those skills to maintain the financial stability of the cooperative. I feel I am qualified to continue to serve as a representative for District 6, and I remain committed to working with all the members of the board and the community to ensure Victory Electric is a cooperative of which we can be proud. Thank you for your vote.</div></div>	<div><div>Randy Quint <i>Dodge City, KS</i> <i>Incumbent</i></div><div>It has been my honor serving you, the members of Victory Electric, for the past three years as a trustee in District 10 of Dodge City. I would be privileged to receive your consideration and vote for another term on the Victory Electric board of trustees. My 25 years of experience working for an electric utility, both as a lineman and an office manager, have given me the confidence and knowledge needed to make prudent business decisions and be an effective trustee for you. There will be many challenges facing Victory Electric in the coming years. My goal is to always be aware and educated on the issues affecting the cooperative and be a trustee who keeps your interests in mind when making board decisions. Thank you for your vote.</div></div>

NOTICE OF PROPOSED BYLAW AMENDMENT

The board of trustees periodically reviews bylaw provisions to improve the cooperative's operations and governance. This bylaw provision is designed to ensure the board of trustees is qualified and independent of outside influences.

Text in ~~red strike through~~ will be deleted. *Text in blue will be added.*

Article 4 • Section 4 • Qualifications

~~No person shall be eligible to become or remain a trustee or to hold any position of trust in the Cooperative who:-~~

~~A. is not a natural person; and whose principal residence is not served by the Cooperative and located within the district which the trustee represents or shall represent, and located within the area certified to the Cooperative by the State Corporation Commission; and~~

~~B. is a Cooperative employee, a close relative of a Cooperative employee, or a close relative of an incumbent trustee, "Close Relative" shall mean any person who, by blood or marriage, is within the third degree of kinship to the principal.~~

~~Upon establishment of the fact that a trustee is holding office in violation of any of the foregoing provisions, the board of trustees shall remove such trustee from office.~~

~~Nothing contained in this section shall affect in any manner whatsoever the validity of any action taken at any meeting of the board of trustees.~~

Article 4 • Section 4 • Qualifications

A) General trustee qualifications.

To become and remain a trustee, a person must comply with the following general qualifications:

- Be an individual.*
- Have the capacity to enter into legally binding contracts.*
- Not have been previously removed or disqualified as a trustee by the board of trustees.*
- Be a high school graduate or have earned an equivalent degree or certification.*
- Except as otherwise provided by the board for good cause, attend at least a majority of all board meetings during each twelve month period commencing with the trustee's election to the board.*
- While a trustee or before becoming a trustee, not to be convicted of or plead guilty to a felony.*

B) Qualifications based on trustee's membership.

To become and remain a trustee, a person must comply with the following membership qualifications. While a trustee and during the one year immediately prior to becoming a trustee:

- Be a member.*

- Have as the trustee's principal residence a residence served by the cooperative within the district that the trustee represents or shall represent. A trustee's principal residence shall be determined as the place where the trustee holds a driver's license and voter registration, where the trustee receives correspondence and is shown as the trustee's address on federal and state income tax returns, and which the trustee actually occupies and resides for at least 15 days in each month.*

C) Independence qualifications.

To become and remain a trustee, a person must comply with the following independence qualifications:

- While a trustee and during the three years immediately before becoming a trustee, not be an employee of the cooperative or of another electric cooperative or entity in which the cooperative is a member or an owner.*
- While a trustee, not be a close relative of an acting trustee. A "close relative" shall mean any person who, by blood or marriage, is within the third degree of kinship to the principal.*
- While a trustee and during the three years immediately before becoming a trustee, not receive or have a close relative that receives more than 10 percent of annual gross income, other than insurance or trustee compensation, directly or indirectly from the cooperative.*
- While a trustee and during the three years immediately before becoming a trustee, not advance or have a close relative, or be a member or owner of an entity that advances the individual's or entity's pecuniary interest by competing with or providing a good or service similar to a good or service provided by the cooperative.*
- While a trustee, not be employed by another trustee or receive more than ten percent of annual gross income from another trustee or an entity in which another trustee owns any interest.*

D) Trustee disqualification

If at any time during the trustee's service a trustee does not comply with all of the above qualifications, then, except as otherwise provided by board for good cause, the board shall disqualify the trustee and the trustee is no longer a trustee if:

- The board notifies the trustee in writing of the basis for, and provides the trustee the opportunity to reply to the board's proposed disqualification and*
- Within 60 days after the board notifies the trustee, the trustee neither complies with nor meets the trustee qualification.*

If a majority of the trustees authorized by these bylaws complies with the trustee qualifications and approve a board action, then the failure of a trustee to comply with the trustee qualifications does not affect the board action taken.

Your board of trustees recommends you vote "for" the proposed bylaw amendment.



Victory Electric member Scott Habiger and son, John, were featured on the cover of the September issue of the *Kansas Country Living* magazine.

TREASURER'S REPORT

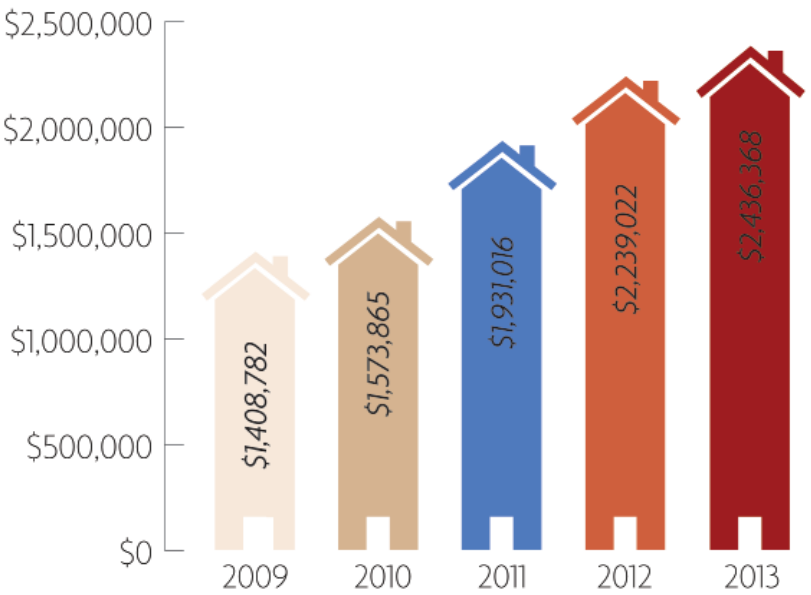
Assets

Total Cost of Plant	\$141,425,291
Less Accum. Depreciation	\$45,841,276
Total Net Value of Plant	\$95,584,015
Temporary Cash Investment	\$4,545,348
Investments in Assoc. Organizations	\$12,357,569
CFC Capital Term Certificates	\$310,383
Cash	\$227,521
Other Fund Investments	\$89,333
Accounts Receivable - Net Sales of Energy	\$3,927,742
Accounts Receivable - Net Other	\$2,041,533
Other Current & Accrued Assets	\$7,138
Materials and Supplies	\$1,706,216
Prepaid Insurance	\$91,477
Deferred Debits	\$3,928,961
Notes Receivable	\$313,227
TOTAL ASSETS	\$125,130,463

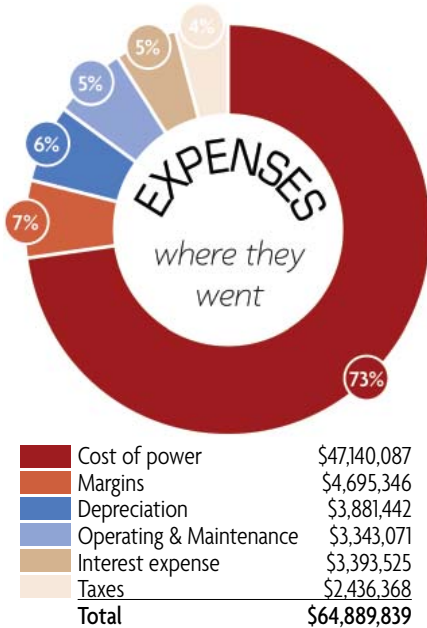
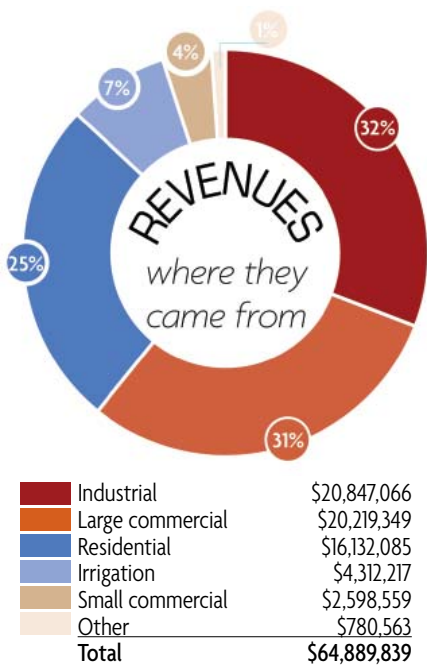
Liabilities

Amount Borrowed (RUS, CFC & CoBank)	\$90,658,727
Less Repayments (Principal)	\$2,372,532
Total Long Term Debt (RUS, CFC & CoBank)	\$88,286,195
Line of Credit - CFC & CoBank	\$1,300,000
Total Debt	\$89,586,195
Property Tax Paid	\$2,436,368
Accrued Vacation	\$592,131
Accrued Interest	\$24,376
Accounts Payable	\$2,390,990
Deferred Credits	\$117,389
Total Payable	\$5,561,254
Consumer Deposits	\$680,523
Patronage Capital & Other Equities	\$27,980,647
Total Member's Equity	\$28,661,170
Other Current & Accrued Liabilities	\$1,321,844
TOTAL LIABILITIES & MEMBERS' EQUITY	\$125,130,463

PROPERTY TAXES - PAID IN THE LAST FIVE YEARS



CAPITAL CREDITS - ALLOCATED IN THE LAST FIVE YEARS





VICTORY ELECTRIC EMPLOYEES

Shane Laws – CEO

Accounting and Customer Service Department

Karla Durrant – CFO
 Ross Adams – Accounting Clerk
 Rae Jean Amy – Executive Administrative Assistant
 Dania Blatnick – Customer Service Representative
 Dennis Brauer – Part-time Accounting Clerk
 Rubi Carbajal – Customer Service Representative
 Helen Cecil – Part-time Customer Service Representative
 Alexa Erives – Customer Service Representative
 Jennifer Gaut – Supervisor of General Accounting
 Monica Lampe – Accounting Clerk
 Sandy Long – Supervisor of Billing

Jessica Mashak – Customer Service Representative
 Alma Robison – Billing Clerk
 Martha Ruiz – Customer Service Representative
 Melissa Ruiz – Payroll Specialist
 Steve Stecklein – Supervisor of Plant Accounting

Communications Department

Jerri Imgarten – Manager of Marketing & Communications
 Micaela Morales – Member Relations Coordinator

Electrician Service Department

Jim Meis – Manager of Electrician Services
 John Austin – Apprentice Electrician
 Harold Bogner – Apprentice Electrician

Steve Day – Master Electrician
 Gilberto Diaz – Part-time Apprentice Electrician
 Francisco Frias – Apprentice Electrician
 James Isenbart – Part-time Apprentice Electrician
 Jason Lutz – Journeyman Electrician
 Kyndell Penick – Apprentice Electrician
 Jeremy Pruitt – Master Electrician
 Curtis Smith – Journeyman Electrician
 Michael Stefan – Part-time Apprentice Electrician
 Richard Torres – Apprentice Electrician

Engineering Department

Greg Underwood – Manager of Engineering
 Brad Ackerman – Supervisor of IT
 Cory Ackerman – Construction Coordinator
 Mark Bennett – Engineer
 Armando Ceja – Journeyman Tree Trimmer
 Jerry Dick – Substation Technician
 Harold Flax – Supervisor of System Technology
 Roy Hampton – Journeyman Meterman
 Rob Henry – Supervisor of Substation Technology
 Steve Jimmerson – Tree Trimmer Foreman
 Heith Konecny – Supervisor of Metering Technology
 Sharon Nolan – Part-time Office Help
 Daniel Pogue – Staking/Field Engineering Technician
 Craig Renick – Journeyman Meterman
 Josh Schmidt – Supv. Key Accounts & Business Development

Human Resources Department

Amy Grasser – Manager of Human Resources

Operations Department

Tom Lowery – Manager of Operations
 Ryan Miller – Supervisor of Operations
 Ross Ackerman – 4th Class Lineman
 Keith Connelly – Journeyman Lineman
 Joel Daniels – Crew Chief

Pat Deaver – Crew Chief
 Jeremy Elling – 4th Class Lineman
 David Gechter – Journeyman Lineman
 Tanner Gemaehlich – 3rd Class Lineman
 Mikey Goddard – Crew Chief
 Phil Huffman – Crew Chief
 Chris Konrade – Journeyman Lineman
 Kirk Konrade – Journeyman Lineman
 Justin Kraft – Journeyman Lineman
 Jacob Ledford – Groundsman
 Dave Lowery – Journeyman Lineman
 Jeff Martinez – 2nd Class Lineman
 Dave Masden – Crew Chief
 Ted McAtee – Journeyman Lineman
 Nick Rennaker – Journeyman Lineman
 Shea Ricke – Journeyman Lineman
 Jason Rohr – Crew Chief
 Jesus Ruiz – 2nd Class Lineman
 Paul Schmidt – Journeyman Lineman
 Mike Shewey – Crew Chief
 Eric Speer – Crew Chief
 Clayton Stein – 3rd Class Lineman
 Nate Stormont – Journeyman Lineman
 Justin Straight – Journeyman Lineman
 Lee Vierthaler – 2nd Class Lineman
 Leroy Woods – Crew Chief

Purchasing and Warehouse Department

Michael Clark – Manager of Purchasing
 Jason Guillen – Warehouse Clerk
 David Haskins – Custodian & Building Maintenance
 Jarod Scheve – Warehouse Clerk
 Larry Schneweis – Warehouse Clerk
 Kevin Sprott – Mechanic
 Lenette Varnell – Part-time Custodian
 Rod Webster – Mechanic

VICTORY ELECTRIC BOARD OF TRUSTEES

The business and affairs of the cooperative are directed by the board of trustees, which exercise the powers of the cooperative. The cooperative territory is divided into districts, all of which are represented by a trustee. Trustees are elected at the annual meeting for three-year terms of office.





Cory Ackerman works on a power line installing Armor Rod.

2013 ANNUAL MEETING MINUTES

The 68th Annual Meeting of Members of The Victory Electric Cooperative Assn., Inc., was held on Tuesday, April 9, 2013, at the Western State Bank Expo in Dodge City, beginning at 7 p.m. The meeting followed a steak dinner served to 471 members and guests for a total of 838 meals served.

The meeting began with the National Anthem sung by Rachel Trombley, and Kirk Larson gave the invocation. President Kenny Wehkamp called the 68th Annual Meeting to order at 7 p.m., pursuant to a notice to all members that was mailed in accordance with the bylaws of the cooperative, and declared a quorum. Wehkamp asked for a motion to approve the minutes of the 2012 annual meeting, and a motion was made and seconded to approve the minutes as mailed. The motion carried. Secretary-Treasurer Pat Morse asked for a motion to waive the reading of the official notice and affidavit of mailing. The motion was made, seconded and the motion carried. He then gave a brief presentation on the financials of the cooperative.

Jerry King, director of marketing and communications, introduced the 2012 youth tour winners: Lindy Bilberry, Garden City; Jennifer Delzeit, Dodge City; Josie Hayes, Hodgeman County; Katy Hibbert, South Gray; and Jaden Butcher, Dodge City. Bilberry gave a brief presentation on the Washington, D.C., tour, and both Hayes and Butcher spoke of the Steamboat Springs, Colo., leadership camp. King introduced the 2013 winners of the Washington, D.C., trip: Myranda Axtell, South Gray; Ashlee Redger, South Gray; and Saif Khan, Dodge City. Winning the Steamboat Springs trip were Aaron Pinkerton, Minneola; Everly Wise, Fowler; and Byrum Bittle, Spearville.

Wehkamp introduced Victory Electric's board of trustees and their spouses: Vice-President John Leis and Jill; Secretary-Treasurer Pat Morse and Shannon; Cedric

Drewes and Diane; Gary Gillespie and Kelly; Jim Imel and Cindy; Terri Larson and Kirk; Richard Lightner and Carol; Loren Ochs and Kay; Randy Quint and Lynn; Ken Schulte and Gwen; and Daryl Tieben and Carol. CEO Terry Janson and Christine; Dave Snapp, Victory Electric attorney;

and himself, President Kenny Wehkamp.

Victory Electric's CEO, Terry Janson, introduced the guests present at the meeting. Wehkamp asked for a report from the nominating committee. Bob Carlson, chairman of the nominating committee, gave the report of the nominating committee. He reported the committee met on February 5, 2013, and nominated the following persons: District 5 – Gary Gillespie, Copeland; District 7 – Brad Ochs and James (Jim) Ochs, both from Jetmore; District 9 – Richard Lightner, Garden City; and District 10 – Pat Morse, Susie Faulds and Scott Gurtner, all from Dodge City. Wehkamp introduced the teller committee consisting of Bob Carlson, inspector of elections; Karla

Durrant, Sandra Long, Dennis Brauer and Jennifer Gaut.

Wehkamp gave the president's report. He talked about SmartHub and how members could access their account and usage data on mobile applications and the web.

Janson gave the CEO's report. He compared current statistics to 1970 and displayed the differences between the cost of power. He also talked about outage management.

Wehkamp gave the results of the election. Winners were District 5 – Gary Gillespie; District 7 – James (Jim) Ochs; District 9 – Richard Lightner; and District 10 – Pat Morse.

Wehkamp asked if there was any old business. There was none. He asked for any new business. There was none.

Numerous prizes from Victory Electric and vendors were given throughout the meeting.

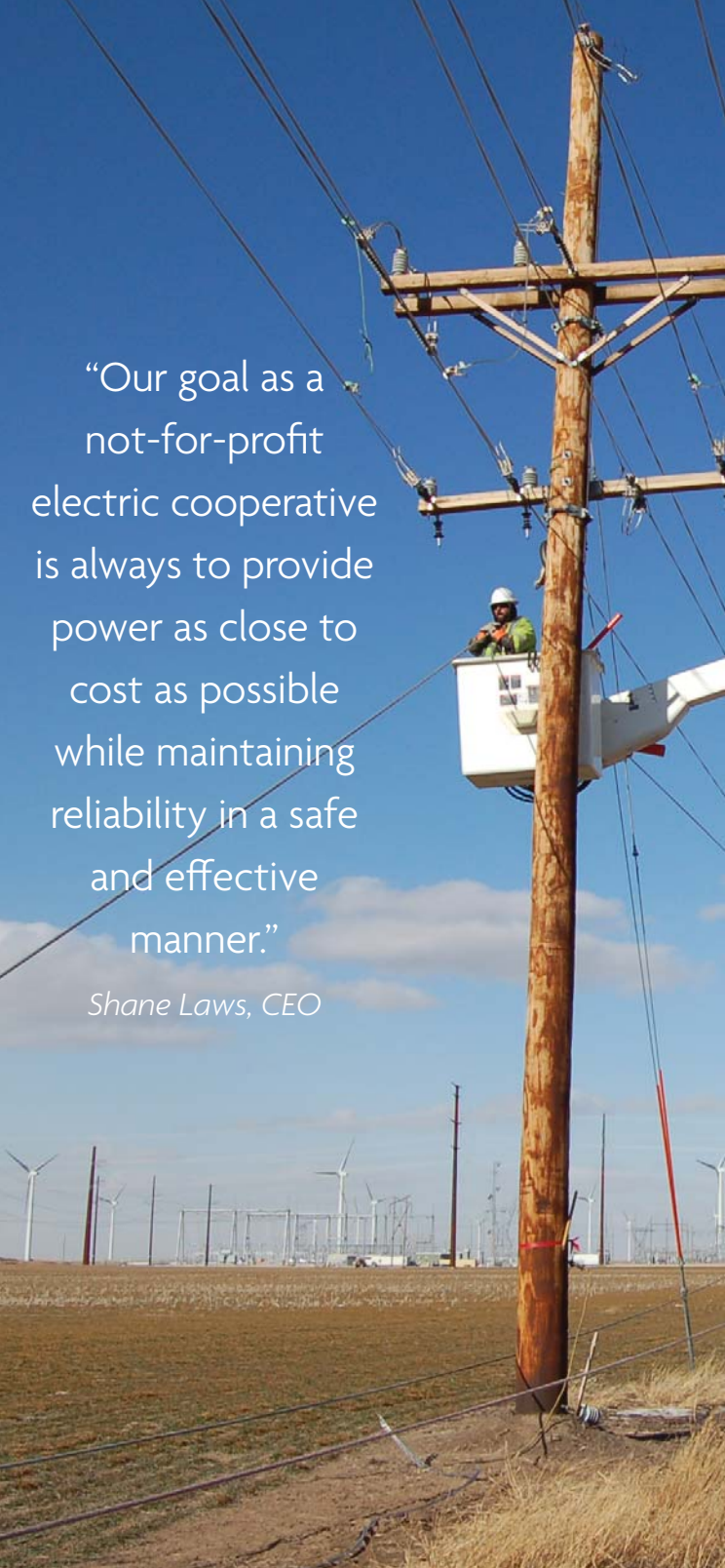
Wehkamp thanked the members for their attendance and participation and adjourned the 68th Annual Meeting at 8:07 p.m.

2013 FAST FACTS

Plant worth	\$141,425,291
Total operating revenue in 2013	\$64,889,839
kWh sold in 2013	688,303,785
System kW demand	154,010
Miles of line	2,789.26
Number of meters	19,544
Number of full-time employees	80
Number of part-time employees	7

“Our goal as a not-for-profit electric cooperative is always to provide power as close to cost as possible while maintaining reliability in a safe and effective manner.”

Shane Laws, CEO





2013 YOUTH TOUR WINNERS

Victory Electric sponsors six local high school juniors to attend two unique youth tour trips and learn about rural electric cooperatives and leadership opportunities.

The 2013 winners will attend the annual meeting to share their experiences with you. The program is now in its 50th year, and we look forward to introducing you to the 2014 winners at the annual meeting.

During the Electric Cooperative Youth Tour, students join 1,600 youth representing cooperatives from across the nation in Washington, D.C. Participants visit monuments and other attractions, as well as visit Capitol Hill to learn more about how our government works. Winning the Washington, D.C., trip were **SAIF KHAN**, Dodge City; **MYRANDA AXTELL**, South Gray; and **ASHLEE REDGER**, South Gray (pictured in the fourth photo from the left).

At Cooperative Youth Leadership Camp in Steamboat Springs, Colo., students join youth from Colorado, Wyoming, Oklahoma and

Kansas. Campers form a mock cooperative, participate in leadership activities, and learn about the electric cooperative industry. Winning the camp trip were **EVERLY WISE**, Fowler; **BYRUM BITTLE**, Spearville; and **AARON PINKERTON**, Minneola (pictured in the third photo from the left).

"Victory Electric is proud to support the youth tour program and send local youth for an experience of a lifetime," said Shane Laws, CEO. "Our hope is that local students will use the information and leadership skills obtained on these trips as inspiration to become leaders in the community."

Winners are selected every winter by Victory Electric from local high school applicants. To win this trip, students are asked to submit a résumé with two short essays and interview with a panel of judges. Victory Electric sponsors three students each year for both the Washington D.C., and Steamboat Springs trips.

VICTORY ENGAGES MEMBERS ONLINE

EXPANDED WEBSITE AND SOCIAL MEDIA KEEP MEMBERS INFORMED

In the past year, Victory Electric has redesigned our website and increased social media interaction in an effort to keep our members engaged and informed of cooperative activities.

The newly designed website, www.victoryelectric.net, maintains all of the functionality of the previous site but boasts a new modern look. In addition to the changes in the design of the website, more information and resources were made available to our members.

Links are available to SmartHub, our online bill pay site, electrical safety information, energy efficiency tips, youth programs, cooperative newsletters, Co-op Connections Card information, and more. It also lists the cooperative bylaws and tariffs.

SmartHub

One of the most frequented links on

Victory's website is SmartHub. Its primary purpose is to be an online bill pay system, but offers much more. Available in both a mobile app and a web version, SmartHub gives members secure access to maintain account information, view bills, see payment history, make payments, set-up recurring payments, and report outages.

Facebook

Another new feature of the website is a feed showing Victory Electric's Facebook posts. It provides a direct link to the page at www.facebook.com/VictoryElectric. A Facebook user can become a "fan" of Victory Electric and elect to receive status updates on their news feed.

Victory Electric's page can be found by using the search or through the direct link Facebook.com/VictoryElectric. You can get the latest co-op updates, energy efficiency tips, photos and videos, outage information, electrical safety tips, community news and events, and more.

Victory Electric's Facebook page is a public site, so if you have not yet joined the Facebook world, you are still able to visit the page.

We invite our members to visit our new website for all the latest news and interact with us on Facebook.



BRING THIS REGISTRATION CARD TO THE ANNUAL MEETING

- Victory Electric's annual meeting is on April 15, 2014, at the Western State Bank Expo Center, located at 11333 US Highway 283.
- Be sure to bring this registration card to the annual meeting and register at the door. Registration starts at 5:30 p.m.
- The meal is at 6 p.m. Dinner will be served to the first 1,000 people.
- The business meeting starts at 7 p.m.

Quick Tips:

- If the service you are paying is not in your name, please call us to request a transfer prior to the meeting. Remember, capital credits are being accrued in the name on the account.
- A registration gift will be given to the first 600 residential members who register at the annual meeting. Bring this card to redeem your gift. Limit of one gift per residential member.

We look forward to seeing you there!



A Touchstone Energy® Cooperative 

3230 North 14th Ave, Dodge City, Kansas 67801
Phone 800-279-7915 or 620-227-2139

PRSRT STD
U.S. POSTAGE PAID
DODGE CITY, KS
PERMIT NO. 502



This is your registration card.
Please bring to the annual meeting on April 15.