

Congratulations!

2014 Youth Tour Winners Announced

Victory Electric is sponsoring five local high school juniors to participate in our Youth Tour programs.

MAKENZY MEIS, Cimarron; **ANDREA SANCHEZ**, Dodge City; and **CAMRYN WILLIAMSON**, Dodge City; will attend the Electric Cooperative Youth Tour to Washington, D.C., in June.

During Youth Tour, the students will join 1,600 youth from across the nation in Washington, D.C. Participants will visit the monuments and other attractions, as well as visit Capitol Hill to learn more about how our government works.

ANDREA BRYANT, Cimarron; **ASHLEE BOHANNAN**, Ingalls; and **MADISON SALMANS**, Hanston; will attend the Cooperative Youth Leadership Camp in Steamboat Springs, CO, in July.

At camp, the Kansas students will join



MaKenzy Meis, DC Winner



Andrea Sanchez, DC Winner



Camryn Williamson, DC Winner



Andrea Bryant, CO Winner



Ashlee Bohannon, CO Winner



Madison Salmans, CO Winner

youth from Colorado, Oklahoma and Wyoming. Campers will form a mock cooperative, learn leadership skills and learn about the cooperative industry.

The six winners were chosen based on an interview, test over cooperatives and cooperative principles, and a resumé.

Congratulations winners!

Haga que su Jardín Trabaje para Usted

Ubicación, ubicación, ubicación es el mantra en bienes y raíces, pero también se aplica a su jardín esta época del año cuando la búsqueda de crear atractivos para bajar la factura de electricidad. La combinación correcta de plantas y árboles de posicionamiento puede producir sombra, embellecer y desenterrar el ahorro de energía. Tan inteligente o eficiencia energética paisajismo, afirma el Departamento estadounidense de energía (DOE), en promedio, puede proporcionar suficientes ahorros de energía para ver el retorno de su inversión inicial en menos de ocho años.

Otra vez, piense ubicación. Cuidadosamente posicionados los árboles pueden reducir el consumo de electricidad de un hogar para calefacción y refrigeración en un 25 por ciento. Utilizando modelos informáticos, determinó que la colocación adecuada de sólo tres árboles en su propiedad puede ahorrar un promedio de los hogares entre \$100 y \$250 en costos de energía anual. Esta primavera, arreglar su jardín para ti. Sólo unas simples consideraciones paisajismo pueden hacer una gran diferencia en la comodidad de su hogar y en la eficiencia de la calefacción y sistemas de refrigeración:

- ▶ Use árboles y plantas para darle sombra al aire acondicionado de ventana. Tener sombra puede aumentar su eficiencia tanto como 10 por ciento. Para buena circulación de aire y acceso, posicione las plantas tres pies de retirado del aire acondicionado.
- ▶ Árboles y arbustos pueden formar barreras contra el viento o muros

protectores que mantén el viento tranquilo de una casa. Eso es importante porque la velocidad del viento disminuye fuera de las temperaturas del aire y en última instancia, ahorra en mayores costos de calefacción. Césped común y otras plantas de bajo crecimiento son barreras ideales. Así que son árboles de hoja perenne, especialmente cuando se combinan con un muro o valla para desviar o incluso levantar viento sobre una casa. Para mejor protección, plante dejando entre dos a cinco veces la altura de los árboles o arbustos entre el cortaviento y la vivienda protegida.

- ▶ Hecho en la Sombra
- ▶ En el interior, usted puede estar protegido de los rayos del sol, pero su factura de electricidad puede levantarse como su aire de acondicionador trabaja más duro mantener su casa fresca y cómoda. Plantación de árboles de sombra puede agregar a su comodidad en casa bajando la temperatura del aire circundante por tanto como nueve grados Fahrenheit. Pero solo para elegir el árbol correcto puede requerir una brújula y paciencia mientras crecen para usted:
- ▶ Al seleccionar árboles de sombra, tenga en cuenta la altura del árbol madura y la forma de su copa de sombra en lo referente a la altura de su hogar. Estos factores son importantes porque ellos deberían influir en cómo lejos de la casa que decide plantar un árbol. Siempre evite plantar cerca de las líneas subterráneas de servicios públicos.


- ▶ Sembrando toma tiempo—un árbol

de 6-pies a 8-pies plantado cerca de la casa iniciará sombra en un año. Dependiendo de la especie y el hogar, el árbol dará sombra el techo en cinco o diez años.

- ▶ Hacer sombra plantando árboles al oeste hacia el oeste frente a la ventana será su primera prioridad.
- ▶ Seleccione un árbol que puede ser plantado a 20 metros de la ventana y que crecerá al menos tres metros más alto que la ventana. Si tienes el espacio, utilice tantos árboles como sea necesario para crear una fila continua a lo largo de todas las principales oeste- y este a las ventanas.
- ▶ Contrario a la intuición, el menos lugar eficiente de energía para un árbol está al sur de una casa.

Diversos árboles pueden servir una variedad de propósitos. Para bloquear el calor del verano mientras que pase el filtro del sol en los meses de invierno, uso de árboles de hojas caducas o aquellos que pierden sus hojas estacionalmente. Árboles de hoja perenne y arbustos, por el contrario, son ideales para proporcionar sombra continua y el bloqueo de fuertes vientos. Además, tenga en cuenta que no todas las plantas de sombra son altas. Arbustos y plantas de cobertura del suelo robusto también proporcionan buena sombra por reducir radiación de calor y aire de enfriamiento antes de llegar a de su casa paredes y ventanas.

Empiece plantar ahorros y deja que su jardín haga todo el trabajo, un bien árbol colocado, arbusto o vid puede entregar sombra efectiva, actuar como un rompe vientos y reducir su factura de electricidad.

A Touchstone Energy® Cooperative 
P.O. Box 1335, 3230 N. 14th Ave.
Dodge City, KS 67801
620-227-2139
www.victoryelectric.net

THE VICTORY
ELECTRIC COOPERATIVE

electronews



The Victory Electric
Cooperative Assn., Inc.

Board of Trustees

Kenny Wehkamp
President

John Leis
Vice President

Pat Morse
Secretary/Treasurer

Cedric Drewes
Trustee

Jim Imel
Trustee

Gary Gillespie
Trustee

Terri Larson
Trustee

Richard Lightner
Trustee

James Ochs
Trustee

Randy Quint
Trustee

Ken Schulte
Trustee

Daryl Tieben
Trustee

Staff

Shane Laws
CEO

Amy Grasser
Manager of Human Resources

Greg Underwood
Manager of Engineering

Jerri Imgarten
Manager of Marketing and Communications

Jim Meis
Manager of Electricians

Karla Durrant
CFO

Michael Clark
Manager of Purchasing/Stores

Ryan Miller
Supervisor of Operations

Tom Lowery
Director of Operations

FROM THE CEO

Self-Regulation Increases Efficiency & Saves Money



Shane Laws

is voting to self-regulate and the benefits to our members.

I discussed the cost savings of self-regulation in last month's column. In addition to the significant savings, one of the biggest benefits of self-regulation is efficiency within the cooperative.

Currently, we are required to keep two separate sets of rate schedules, accounting records and financial reports for the two divisions: one for the self-regulated co-op territory and the other for the Kansas Corporation Commission (KCC) regulated Mid-Kansas Electric Cooperative (MKEC) territory. If the members vote to approve the proposal to self-regulate, these separate accounting requirements would cease, simplifying processes and saving employees' time which means less cost to you the member.

I would like to reiterate that the intent behind the vote for self-

regulation is not about raising rates; it's about the right to keep decisions about rates at home instead of in Topeka. Our goal as a not-for-profit electric cooperative is always to provide power as close to cost as possible while maintaining reliability in a safe and effective manner.

Victory's member-elected board of trustees is entrusted with making financial decisions for the cooperative, including rate changes and adjustments. They are members too, so when rates are increased, their electric bills are affected just like yours and mine.

Self-regulation will not eliminate all regulatory requirements for Victory. We will continue to be subject to other state and federal environmental, safety, reliability and labor regulations, even after self-regulation. Certain functions will remain under KCC authority, regardless of the members' vote.

The vote on self-regulation is slated for May 2014, and members will receive ballots in early May. We have also scheduled a public meeting at Victory's offices on April 22 at 6 p.m. to answer any questions or concerns about self-regulation. For more information, please visit our website at www.victoryelectric.net.



Visite Sitio Web y Únase a Nosotros en Facebook

Visite nuestro sitio web www.victoryelectric.net. En nuestro sitio Web, usted encontrará un calendario de eventos, con frecuencia pregunta, pago de factura y energía calculadora sólo por nombrar algunas herramientas!

También puede ser una fan de Victory Electric en Facebook buscando Victory Electric Cooperativa Assn, Inc. Consulte nuestra página en Facebook para actualizaciones, información de interrupción y consejos de eficiencia de energía. Facebook es una excelente forma de mantenerse en contacto con nuestros miembros.



Happy Easter Sunday, April 20

CFL Charlie Says "Come Get Your Free CFL!"



This month's lucky winners are... Wardo Abdihalim, Phyllis J Adams, Terry Ensz, Blanca Landaverde, Aaron Law, Gema Lima, Troy Robertson, and Donita Schultz. Come by Victory Electric Cooperative to get your free compact fluorescent light bulb (CFL). Every month, Victory Electric gives members free CFL light bulbs. Congratulations winners!

Visit our Website & Join us on Facebook



Visit our website at www.victoryelectric.net. On our website, you will find a calendar of events, frequently asked questions, bill pay and energy calculators—just to name a few tools! You can also become a fan of Victory Electric on Facebook at facebook.com/VictoryElectric or by searching for The Victory Electric Cooperative Assn., Inc. Check our page for updates, outage information and energy efficiency tips. Facebook is a great way to stay in touch.

Mark Your Calendars!

The 68th Annual Meeting of Victory Electric has been scheduled for April 15 at the Western State Bank Expo Center. A meal will be served and everyone attending will receive a registration gift and have a chance to win some great door prizes.

April 2014						
S	M	T	W	U	F	S
		1	2	3	4	5
6	7	8	9	10	11	12
13	14	15	16	17	18	19
20	21	22	23	24	25	26
27	28	29	30			

Annual Report & Voting Ballots Mailed

The business and affairs of the cooperative are directed by the board of trustees.

The cooperative territory is divided into districts, all of which are represented by a trustee. Trustees are elected at the annual meeting for a three-year term.

Districts 2, 4, 6 and 10 are up for election this year. Every member of Victory Electric will receive an Annual Report in the mail. Inside this Annual Report will be ballots for the four voting districts.

Victory Hosts Irrigation & Technology Seminar

Victory Electric's 16th Annual Irrigation and Technology Seminar had a great turnout on March 7.

This year's event sported a large number of attendees and speakers. Seven speakers discussed a variety of topics from the farm bill to Kansas water policy.

We would like to thank the

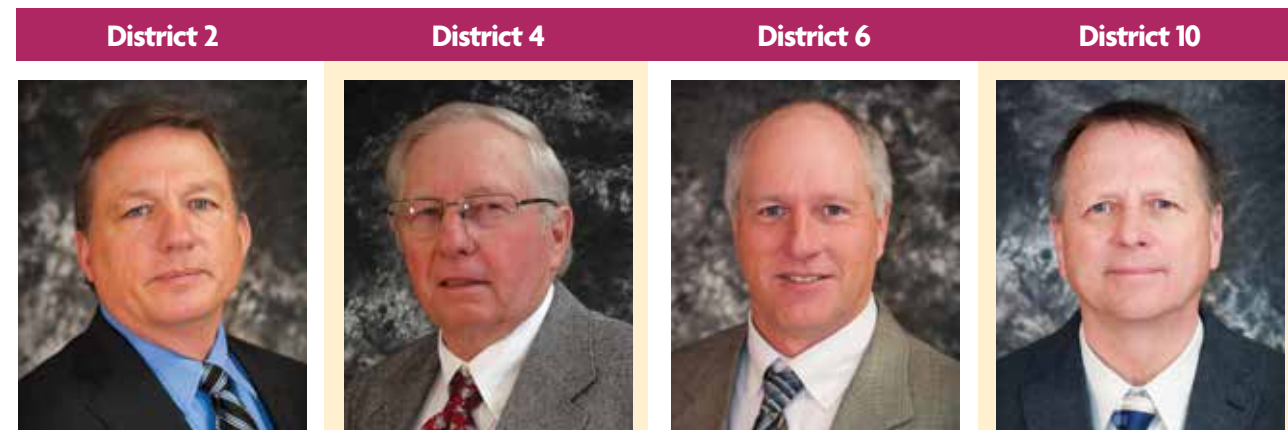


Seven speakers discussed a variety of topics with attendees at the Irrigation and Technology Seminar on March 7.



Watch for your Annual Report in the mail.

Candidates for the Victory Electric Board of Trustees



John Leis

Minneola—Incumbent

I have been proud to serve on the Victory Electric board of trustees for the past nine years. Victory Electric has experienced many changes during the past few years with the implementation of various new technologies designed to save Victory members money and increase system efficiency.

Victory Electric continues to be a community-minded leader, and I hope to be a part of the effort to promote the future growth and success of both our community and the cooperative. I will do my best to adhere to our mission statement of providing members with safe, reliable service at a competitive rate.

I would like to thank the members of District 2 for your support over the years, and I would be grateful for the opportunity to continue to serve as your trustee.

Jim Imel

Bucklin—Incumbent

I am grateful for the opportunity to serve as a trustee of Victory Electric. In my time on the board, we have worked through many exciting challenges, and I would appreciate being a part of Victory's future growth and success.

My time and experience serving on the Victory Electric board of trustees has been invaluable. I have gained extensive knowledge of cooperative business and finances that will be of benefit to the members of Victory Electric. I've also had the opportunity to diversify my knowledge of the electric industry by representing Victory Electric on the Sunflower board of directors.

I am very thankful for my district members' support and input, and I am dedicated to facing any upcoming challenges at Victory Electric with increased knowledge and experience.

Kenny Wehkamp

Cimarron—Incumbent

I have been honored to serve and represent the members of Victory Electric on the board of trustees. I will continue to represent the members of Victory as I have in the past.

I currently serve as president of Victory's board of trustees. I also serve as the delegate on the Mid-Kansas board, as well as an alternate delegate for the Sunflower Electric board.

As a self-employed farmer, I am well versed in fiscal responsibility and business management, and I will continue to use those skills to maintain the financial stability of the cooperative. I feel I am qualified to continue to serve as a representative for District 6, and I remain committed to working with all the members of the board and the community to ensure Victory Electric is a cooperative of which we can be proud. Thank you for your vote.

Randy Quint

Dodge City—Incumbent

It has been my honor serving you, the members of Victory Electric, for the past three years as a trustee in District 10 of Dodge City. I would be privileged to receive your consideration and vote for another term on the Victory Electric board of trustees.

My 25 years of experience working for an electric utility, both as a lineman and an office manager, have given me the confidence and knowledge needed to make prudent business decisions and be an effective trustee for you.

There will be many challenges facing Victory Electric in the coming years. My goal is to always be aware and educated on the issues affecting the cooperative and be a trustee who keeps your interests in mind when making board decisions. Thank you for your vote.

Plant Trees & Make Your Yard Work for You

Location, location, location is the mantra in real estate, but it also applies to your yard this time of year when the search is on to lower energy bills and create curb appeal. Positioning the right combination of plants and trees can yield shade, beautify, and unearth energy savings. Such smart or energy-efficient landscaping, claims the U.S. Department of Energy (DOE), can on average, provide enough energy savings to see a return on your initial investment in less than eight years.

Again, think location. Carefully positioned trees can reduce a household's energy consumption for heating and cooling by up to 25 percent. Using computer models, the DOE determined that proper placement of only three trees on your property can save an average household between \$100 and \$250 in yearly energy costs. This spring, make your yard work for you. Just a few simple landscaping considerations can make a big difference in your home's comfort and in the efficiency of your heating and cooling systems:

- ▶ **Use trees and plants to shade a window air conditioner. Having shade can increase its efficiency by as much as 10 percent.** For good airflow and access, position plants more than three feet from the air conditioner.
- ▶ **Shrubs and trees can form windbreaks or protective walls that keep wind chill away from a home.** That's important because wind speed lowers outside air temperatures, and ultimately saves on higher heating costs. Common turf grass and other low-growing plants are

ideal barriers. So are evergreens, especially when combined with a wall or fence to deflect or even lift wind over a home. For best protection, plan on leaving between two to five times the mature height of the trees or shrubs between the windbreak and the protected home.

Made in the Shade

Indoors, you may be protected from the sun's rays, but your energy bill can rise as your air conditioner works harder to keep your house cool and comfortable. Planting shade trees can add to your comfort at home by dropping the surrounding air temperature by as much as nine degrees Fahrenheit. But choosing just the right tree may require a compass and patience while they grow to work for you:

- ▶ **When selecting shade trees, keep in mind the mature height of the tree and the shape of its shade canopy in relation to the height of your home.** These factors are important because they should

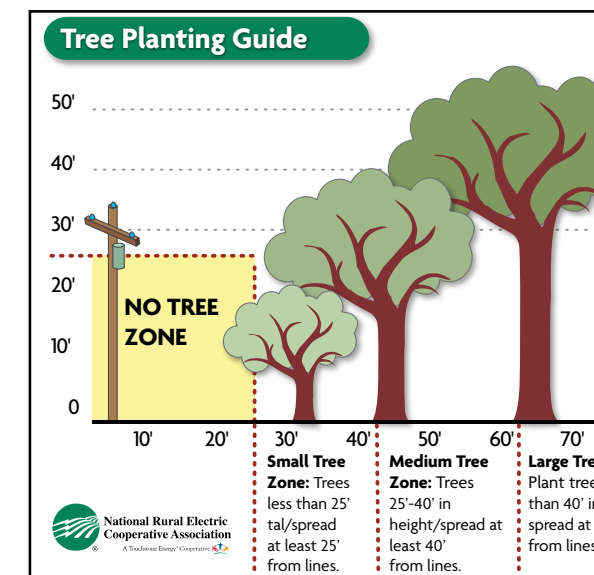
influence how far from the house you decide to plant a tree. Always avoid planting near underground utility lines.

- ▶ **Shading takes time—a six to eight-foot deciduous tree planted near a house will begin shading windows in a year.** Depending on the species and the home, the tree will shade the roof in five to 10 years.
- ▶ **Make planting shade trees due west of west-facing windows your first priority.**
- ▶ **Select a tree that can be planted within 20 feet of the window and that will grow at least 10 feet taller than that window.** If you have the space, use as many trees as needed to create a continuous row along all major west-and east-facing windows.
- ▶ **Contrary to intuition, the least energy efficient place for a tree is to the south of a house.**

Different trees can serve a variety of purposes. To block summer heat while letting sun filter through in the winter months, use deciduous

trees or those that lose their leaves seasonally. Evergreens and shrubs, on the other hand, are ideal for providing continuous shade and blocking heavy winds. Also, keep in mind that not all shade plants are tall. Shrubs and sturdy groundcover plants also provide good shade by reducing heat radiation and cooling air before it reaches your home's walls and windows.

Start planting savings and let your yard do all the work—a well-placed tree, shrub, or vine can deliver effective shade, act as a windbreak, and reduce your energy bills.



Consider the mature height of trees before planting. Do not plant any tree near overhead power lines that can grow to 25 feet tall. A mature height of less than 15 feet is recommended.