

A Touchstone Energy® Cooperative 

P.O. Box 1335, 3230 N. 14th Ave.
Dodge City, KS 67801
620-227-2139
www.victoryelectric.net

THE VICTORY ELECTRIC COOPERATIVE

electronews



The Victory Electric Cooperative Assn., Inc.

Board of Trustees

Kenny Wehkamp
President

John Leis
Vice President

Pat Morse
Secretary/Treasurer

Cedric Drewes
Trustee

Jim Imel
Trustee

Gary Gillespie
Trustee

Terri Larson
Trustee

Richard Lightner
Trustee

Loren Ochs
Trustee

Randy Quint
Trustee

Ken Schulte
Trustee

Daryl Tieben
Trustee

Staff

Terry Janson
CEO

Karla Durrant
Mgr of Finance and Admin.

Tom Lowery
Director of Operations

Ryan Miller
Supervisor of Operations

Mike Clark
Manager of Purchasing/Stores

Greg Underwood
Manager of Engineering

Jerry King
Marketing and Communications

Monica Lampe
Human Resources

Jim Meis
Mgr of Electricians

Jerri Imgarten
Editor

FROM THE MANAGER

Be a Fam with a Plan

It's not pleasant to think about worst-case scenarios. A little planning can make a difference if the worst does happen. Follow these tips to avoid feeling helpless during a disaster.

Before:

- ▶ **Communicate:** Talk with your family about who to call, where to go, and what to do if disaster strikes.
- ▶ **Educate:** Plan different strategies on what to do for different situations. Map out a fire escape route from all areas of your home, and establish a safe place to go during threatening weather. Make sure all family members know their full names, address, and phone numbers. Agree on an out-of-town relative or friend to call if everyone gets separated during a disaster, and have an ICE (In Case of Emergency) contact in your cell phone that first responders can call if needed.
- ▶ **Prepare:** Set up warning systems in your home—fire detectors and carbon monoxide alarms give advance notice that can save lives. Use a battery-operated weather radio for advance storm warnings, and subscribe to your local Office of Emergency Management alerts by text or e-mail if available. Keep an emergency kit handy that contains five days worth of non-perishable food and water, first aid supplies, a list of phone numbers (including your electric co-op and other utilities' outage numbers), medicines, and cleaning supplies. Also, plan for pets or any special needs for family members. Then practice your emergency plans.

During:

- ▶ **Keep calm:** Think clearly and follow your plan. Use the resources you prepared in case of emergencies.
- ▶ **Emergency phone:** Keep a corded landline phone handy in case of emergency. If cell phone batteries die, there's no way to charge them during a power outage. A landline phone will still work without electricity and become your link to the outside world.

Continued on page 20-B ▶



Terry Janson

*A little
planning
can make a
difference...*

Saving Money, Cont.

► *Continued from page 20-A*

After:

- **Be patient:** Wait for all danger to pass. Never re-enter an evacuated area without permission to do so, and remember to use caution when you do go back into your home—you can't always see danger, such as a ruptured gas line.
- **Avoid delayed danger:** Do not approach downed wires or power lines, and watch for rising waters. Keep standby generators in well-ventilated areas—never run a generator indoors, even in a garage.

With a little planning, the worst can be avoided during disasters. Visit redcross.org or ready.gov for more disaster planning ideas. Taking the time to be prepared is worth the effort now in case of emergency later.

'Til Next Time, TJ

Visit our Website & Join Victory Electric on Facebook

Visit www.victoryelectric.net and you will find a calendar of events, frequently asked questions, bill pay and energy calculators—just to name a few tools!

You can also become a fan of Victory Electric on Facebook at facebook.com/VictoryElectric or by searching for The Victory Electric Cooperative Assn., Inc. Check our page for updates, outage information and energy efficiency tips. Facebook is a great way to stay in touch and stay apprised of co-op events and news.



August 3 Storm Damages Transmission Line and Sub

On the evening of Friday, August 3, a storm moved through Victory Electric territory causing major damages and outages in Minneola, Bloom, Ford and the surrounding areas.

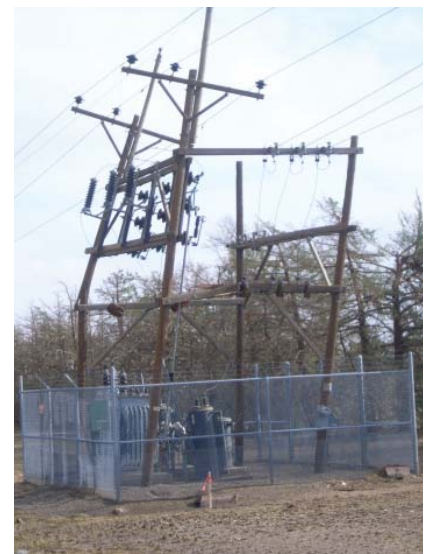
“We lost about 90 poles that night,” said Tom Lowery, Victory’s manager of operations. “The storm caused damage from northwest of Minneola to southeast of Offerle. The most significant damage was on 283 Hwy north of Minneola. We lost about 45 transmission poles in that location. We lost 19 poles near Ford and

the other 26 were scattered throughout the territory. We were able to make repairs and/or reroute power and to most areas were re-energized by Saturday evening.”

Because of the extensive damage to the transmission line north of Minneola, Victory Electric elected to replace all of the existing structures and replace with new poles and wire. Victory crews spent the week replacing approximately three miles, or 80 poles, and restrung new wire.

“Replacing the section of trans-

mission line north of Minneola was already in our existing work plan,” Lowery said. “But this storm forced us to do the work a little sooner than we planned. We would like to thank Southern Pioneer crews for their help in rebuilding the line. The new line was energized midday Friday, August 10, and is now in use.”



Left: Because of the extensive damage to the transmission line north of Minneola, Victory Electric elected to replace all of the existing structures and replace with new poles and wire. Victory crews spent the week replacing approximately three miles, or 80 poles, and restrung new wire. **Right:** The storm heavily damaged the Bloom substation.

Victory Electric and Dodge City Days Parade



5.

Why Buy Local *Keeping dollars local*

Why buy local? There are numerous benefits to buying local. First, when those coveted big, job-creating businesses look to locate in a city or town, they look at the statistics of how many people buy local. Ford County has total retail sales of \$484.7 million, and compared to other towns and counties approximately the same size, Ford County doesn't do as well.

In Finney County (Garden City), they have total retail sales of \$680.7 million, almost \$200 million more in sales than in Dodge City. Great Bend and Liberal do approximately the same in total retail sales, but they have approximately 2,000 less households than Dodge City.

Therefore, towns like Garden City, which is approximately the same size as Dodge City, will attract more businesses because they draw in more local buyers.

Another important fact that many forget when they travel is the cost to travel to those places. Using Wichita and Garden City as examples, using the calculation (IRS mileage rate x the miles) + (average Ford County hourly wage x time to drive), the average Ford County citizen is spending almost \$17 going to Garden City and \$57 going to Wichita, without even opening your wallet at a store.

Victory Electric recognized a need for a "buy local" campaign. Along with United Wireless, Cox Communications, Dodge City Community College and Weece Furniture Outlet, "Buy Close By" was formed.

The idea behind the marketing campaign is to encourage consumers to stay in Dodge City and Ford County for their shopping. Local businesses are offering discounts, coupons, giveaways and much more.

For more information on the discounts being offered, please visit the website at www.buycloseby.com or [facebook.com/buycloseby](https://www.facebook.com/buycloseby).

If you are a business and are interested in participating, contact Josh Schmidt at 620-227-2139.

1. Makenzie Mashak ready to hand out candy. 2. Remington Miller and Cooper Speer take a ride on the train. 3. Lauren Garlington and friend. 4. The old Dodge Powerwagon represented Victory in the early years of electricity. 5. The Victory Electric group.



1.



2.



3.



4.

Local Students attend Leadership Camp

Butcher, Hibbert and Hayes participate in Cooperative Youth Leadership Camp

Victory Electric sent local students **JADEN BUTCHER**, Dodge City; **JOSIE HAYES**, Jetmore; and **KATY HIBBERT**, Cimarron; to Steamboat Springs, Colo., along with 30 other high school students from Kansas. The students joined youth from Colorado, Oklahoma and Wyoming at the Cooperative Youth Leadership Camp, July 14-20, 2012.

“Victory Electric is proud to support the Cooperative Leadership Camp and send our youth to learn first-hand how cooperatives function,” said Terry Janson, CEO. “Our hope is that local students will gain some awareness of how our electric cooperative works and how important it is for the youth to be involved in our community.”

During their weeklong stay in Colorado, the students created their own cooperative complete with a board of trustees and general manager selected by the students.

Among other activities were legislative presentations, a high voltage display and a competition to build a transmission line from craft supplies. Students also toured Craig Power Plant and Trapper Mine.

“These student leaders will be great representatives of both their electric cooperatives and their communities,” said Shana Read, Kansas Electric Cooperative’s youth director. “We are pleased to continue this tradition of taking Kansas youth to learn about electric cooperatives and our nation’s government.”

Butcher, Hayes and Hibbert were selected from a group of high school applicants by Victory Electric. To win this trip, students were asked to submit a résumé, take a 35-question exam on cooperatives, and interview with a panel of judges. Victory Electric sponsors this trip for up to three students each year. For more information, contact Jerri Imgarten at 620-371-7730.



From left: Josie Hayes, Jetmore, Jaden Butcher, Dodge City and Katy Hibbert, Cimarron, traveled to Steamboat Springs, CO, for Cooperative Youth Leadership Camp.

Jaden Butcher

Dodge City High School



Jaden Butcher

My trip to Steamboat Springs was phenomenal and unforgettable. I’ll admit, prior to leaving I was nervous and afraid that the camp wouldn’t be as much fun as I was hoping, but I couldn’t have been more wrong! Even with the endless bus rides, every single moment was filled with fun, meeting amazing new people, learning new things, and opening my mind to the people and things around me.

My cabin mates were some of the most genuinely amazing people I have ever met in my 17 years. There were nights where Tara, Becca, Canyon and I stayed up in our cabin loft talking about life and how we perceived the world around us. Everyone at camp got along and there was a sort of parallel understanding between us that we were all similar and there was no need to be anyone, but ourselves.

Besides the friends I made and the things we had in common, rafting was extremely cool! We had fights between our rafts, there were people being hijacked out of their rafts into the river, ambassadors attacking us with water guns, and so many other crazy happenings. The seminars were quite interesting with subjects ranging from renewable energy, how energy is harvested and stored, and even how the power lines affect the birds of prey around them. Being surrounded by things that were green and feeling rain for the first time in ages made being in the beautiful Colorado Rockies even more magnificent.

I learned a lot about cooperatives and the way they interact with the community. This camp is truly amazing and I’m so thankful that I had the opportunity to go and have the experience of a lifetime.

Every single moment was filled with fun.

Katie Hibbert

South Gray High School

Leadership camp at Steamboat really changed my life. I know it is a cliché, but I'm serious. The bus ride with the Kansas and Oklahoma kids was very entertaining. We played trivia question games on the loud speaker about Kansas and Oklahoma. Honestly, I answered more Oklahoma answers right, which is bad considering I'm from Kansas.



Katie Hibbert

It was raining at camp when we arrived, which was new to us Kansans. We had a very nice cabin and it was very good to learn how to wake up and make your own breakfast and run out to the Glen.

In the Glen, we had inspirational speakers and group activities come to talk. We learned a lot more about cooperatives and how they work, which was very interesting. We elected a board, who then chose a general manager, just like regular cooperatives.

One day we went river rafting, which was probably the best day. The mountains and scenery were very beautiful. We got in a raft with eight people and headed out on our journey. It was a wet one. We got to go swimming a few times when it was shallow enough. We started a lot of water fights between boats and stole other rafts' paddles. Our guide was pretty cool and let us swim through the rapids. It was an awesome experience, but one thing to remember was to keep our feet up...rocks hurt.

Another day we toured Craig Station and learned about how electricity is made. It was very hot in the boiler rooms and the roof was ridiculously high. We wore hard hats and ear plugs. We looked really cool.

We also got to ride on the gondolas down the mountain for the banquet. Going down was much better than going up. It was so windy, we had to take buses up the mountain, and they kept overheating. Talk about terrifying! We survived and ate a lot of Italian food.

All and all, this trip was everything I didn't expect. When I first thought about this camp I didn't think it would be fun. I thought I would just sit there and be bored, but that first step on the charter bus full of crazy Kansas and Colorado kids brings you into a whole different world. This camp was the best camp I have ever been to and definitely worth applying. Thank you to Victory Electric Cooperative for giving me an experience and opportunity of a lifetime.

Josie Hayes

Hodgeman County High School



Josie Hayes

If you were to ask an average high school student how an electric cooperative works, you would most likely receive a blank stare or an "I don't know." Being involved in the Cooperative Youth Leadership Camp was an amazing and fun learning experience. Going into camp, I had no idea what to expect. Getting on a bus full of strangers would be hard for most people, but after a few hours I had already made several life-long friends.

To start off camp, we elected a board of directors, just like a real electric cooperative. Fortunately, I was chosen to be on the board. As a board member, I was involved in interviewing applicants and selecting a general manager. I also helped with the committee that helped to plan the camp dance and reported progress back to the board.

Not only did we learn about leadership positions in a cooperative, but we also learned about how electricity is made and transported to us, the members. From the coal mine, to the power plant and all the way to our homes, we learned the entire process. We had the privilege to witness the power of electricity first hand with a high voltage safety display. We also got to see how money made in a cooperative is not-for-profit. Our camp made the decision to donate the money we made from our concession stand to one of our presentations, Hawk Quest.

Of course, camp can't be all about learning. To throw some more fun into the camp experience, we enjoyed a dance, talent show, volleyball tournament, swimming and river rafting (my favorite).

All in all, this camp was a great experience. It gave me much more respect as to where my electricity comes from and all the people who help get it to me. I am so thankful to Victory Electric for making this trip possible for me. I met some amazing people and made many great memories that I will never forget.

From the coal mine, to the power plant, and all the way to our homes, we learned the entire process.

CFL Charlie Says, "Come Get Your Free CFL Bulb!"

And this month's winners are... Harold Smith, Kevin Redger, Clair McElwain, Gerald Droste, Rod Allen, Eric O'Hara, Sara Rodriguez, and Larry Schmidt.

Come by Victory Electric, talk to Josh or Jerry and get your free compact florescent light bulb (CFL).

Every month Victory Electric will be giving free CFL light bulbs.



Congratulations winners!

Smith Earns Journeyman Electrician Status



Curtis Smith

ing as an apprentice and preparing for the exam. According to information on the wisegeeks.com website, the path to becoming a journeyman electrician starts when an individual enters an apprenticeship program. After four years, he or she is eligible to take the Journeyman's Electrical Exam, which is administered by individual states based on principles in the National Electric Code.

Victory Electric electrician, **CURTIS SMITH**, recently passed the exam to earn his journeyman electrician status.

Smith has spent several years work-

After receiving certification, a journeyman is permitted to work unsupervised on any type of electrical system. He or she may install and repair wiring and conduit, install fixtures and equipment, or run power lines for municipal organizations. On the residential side, a journeyman electrician is permitted to perform all aspects of creating a complete electrical system in a home. The journeyman electrician may also train others, typically apprentices, working toward their own certification.

While a journeyman is permitted to perform a broad range of tasks, he or she is not permitted to obtain electrical permits or complete design work for electrical systems. In order to perform these tasks, the journeyman electrician must gain two additional years of work experience, then sit for the Master's Certification Exam. Upon successful completion of the Master's exam, an individual may design systems and even open his or her own business.

The managers and employees at Victory Electric would like to extend congratulations to Curtis for his achievements!

Victory's Energy Efficiency Rebate Program

Victory Electric would like to remind our members about the heat pump and water heater rebate programs available to all our members.

The objective of the heat pump rebate program is to encourage energy efficiency and conservation by encouraging you to install qualified air source heat pumps or geothermal heat pumps to heat and cool your home or business.

The rebate is \$200/ton for an air or ground source heat pump. The minimum requirements for an air source heat pump are a SEER of 14.5 and an HSPF of 8.2. For a geothermal heat pump, the minimum requirements are a COP of 3.3 and an EER of

14.1 (closed loop) and a COP of 3.6 and an EER of 16.2 (open loop). Both must have a minimum unit size of two tons. Heat pumps must be permanently installed and dual-fuel units do not qualify for the rebate. If you have any questions about installing a heat pump in your home, contact your local heating and air specialist.

The objective of the water heater rebate program is to promote energy efficiency and conservation by encouraging you to install energy efficient water heaters.

The rebate is \$200 towards an electric water heater. Electric water heaters must have a minimum capacity of 40 gallons and a maximum

connected wattage of 5,500 watts. It must have a minimum efficiency rating of 93 percent and be equipped with a safety pressure relief valve.

By taking advantage of the rebates, you can also qualify for our all-electric tariffs. To receive these tariffs, you must provide proof that your home is completely electric through a home inspection by Victory Electric personnel. Also, for proof that the unit meets rebate qualifications, we need a copy of the heating/air/plumbing contractors' invoice.

If you have any questions about the rebates above, please contact Jerry King or Josh Schmidt at 620-227-2139.

Generator Safety: *Our Lives are on the Line*

The safety of you, our members, and our employees is a top priority at Victory Electric, especially during dangerous times. When storms hit our area, we rush to your aid as soon as weather conditions allow our line workers to travel and make repairs safely.

Our line crews take necessary precautions before they work on downed power lines. First, they verify a circuit has been de-energized, and that proper switches are opened and tagged to isolate the circuit from the system. We place ground chains on the circuit—on both sides of workers—to make sure the line cannot be energized while work's being done.

Even after these measures, our workers' lives remain in your hands.

Victory Electric is proud of our outstanding safety record, but sometimes, no matter how many steps we take to keep everyone safe, the very people we are there to help unknowingly put our lives—and their own—in danger.

Portable generators, widely used when power lines are down, can prove fatal to line workers and your neighbors when used improperly.

In 2005, a lineman died in Flomaton, Ala., when he contacted a power line that was energized by an improperly installed generator. Forty-one-year-old Ronnie Adams of Winterville, Ga., was working to restore power after Hurricane Dennis. He was married and had two teenage children.

Of course, no one would ever purposely cause the death of a line worker. Nevertheless, a generator connected to a home's wiring or plugged into a regular household outlet can cause back feeding along power lines and electrocute anyone who comes in contact with them—even if the line seems dead.

And Victory Electric employees are not the only ones in danger when a portable generator is used improp-

erly. Generator owners themselves may be at risk of electrocution, fire injury, property damage, or carbon monoxide poisoning if they do not follow the necessary safety rules.

Portable generators can be very helpful to consumers during outages. But we urge you to follow these safety guidelines when using one:

- ▶ **Never connect a generator directly to your home's wiring** unless your home has been wired for generator use. This can cause back feeding along power lines and electrocute anyone coming in contact with them, including line workers making repairs. Have a licensed electrician install the equipment necessary to safely connect emergency generators to your home.
- ▶ **Always plug appliances directly into generators.** Connecting the generator to your home's circuits or wiring must be done by a qualified, licensed electrician who will install a transfer switch to prevent back feeding.
- ▶ **Use heavy-duty, outdoor-rated extension cords.** Make sure extension cords are free of cuts or tears and the plug has three prongs. Overloaded cords can cause fires or equipment damage.
- ▶ **Ensure your generator is properly grounded.**
- ▶ **Never overload a generator.** A portable generator should only be used when necessary to power essential equipment or appliances.
- ▶ **Turn off all equipment powered by the generator** before shutting it down.
- ▶ **Keep the generator dry.** Operate it on a dry surface under an open structure.
- ▶ **Always have a fully charged fire extinguisher nearby.**
- ▶ **Never fuel a generator** while it is operating.
- ▶ **Read and adhere to the manufacturer's instructions** for safe operation. Never cut corners when it comes to safety.

We encourage you to protect the well-being and safety of your family during outages, and safeguard those who come to your aid during emergency situations. If your generator is needing serviced, please contact Victory Electric, we have electricians on staff who can help. When we work together for safety and the good of our communities, we all benefit.



Seguridad de Generador: *Nuestras Vidas están en la Línea*

La seguridad de nuestros miembros y nuestros empleados es una prioridad en Victory Electric especialmente durante tiempos peligrosos. Cuando las tormentas afectan nuestra zona, estamos corriendo en su ayuda tan pronto como las condiciones climáticas permiten a nuestros trabajadores de la línea viajar y hacer reparaciones de manera segura.

Nuestro equipo de línea toma las precauciones necesarias antes de trabajar en las líneas eléctricas caídas. En primer lugar, verificar un circuito ha sido desactivado, y que los interruptores apropiados se abren y etiquetados para aislar el circuito del sistema. Ponemos las cadenas de tierra en el circuito-en ambos lados de los trabajadores, para asegurarse de que la línea no se puede activar mientras el trabajo se está haciendo.

Pero incluso después de estas medidas, las vidas de nuestros trabajadores permanecen en sus manos.

Victory Electric está orgullosa de nuestro historial de seguridad excelente, pero a veces, no importan cuántos pasos tomamos para proteger a todo el mundo, las personas están poniendo nuestras vidas—y su propia—en peligro,

Generadores portátiles, ampliamente utilizados



cuando las líneas eléctricas son hacia abajo, pueden resultar fatales para los trabajadores de la línea y sus vecinos cuando se utiliza incorrectamente

En 2005, un liniero murió Flomaton, Alabama, cuando entró en contacto con una línea de alimentación que fue activada por un generador mal instalado. Cuarenta y uno-años Ronnie Adams de Winterville, GA., estaba trabajando para restaurar la energía después del huracán Dennis. Estaba casado y tenía dos hijos adolescentes.

Por supuesto, nadie nunca deliberadamente causaría la muerte de un trabajador de la línea. Sin embargo, un generador conectado al cableado de una casa o enchufado en un tomacorriente regular puede causar retroalimentación a lo largo de las líneas eléctricas y electrocutar a cualquiera que entra en contacto con ellos, incluso si la línea parece muerta.

Los empleados de Victory Electric no son los únicos en peligro cuando un generador portátil se utiliza indebidamente. Propietarios de generador sí pueden estar en riesgo de electrocución, incendio de lesiones, daños a la propiedad o envenenamiento por monóxido de carbono si no siguen las normas de seguridad necesarias.

Generadores portátiles pueden ser muy útiles para los consumidores durante las interrupciones. Pero le pedimos que siga estas pautas de seguridad cuando use uno:

► **Nunca conecte un generador directamente al cableado de su hogar a menos que su casa ha sido conectada para uso de generadores.** Esto puede causar retroalimentación a lo largo de las líneas eléctricas y electrocutar a alguien contacto con ellos, incluidos los trabajadores de la línea realizar reparaciones. Tienen un electricista calificado instale el

equipo necesario para conectar con seguridad generadores de emergencia a su casa.

- **Enchufar aparatos directamente en generadores.** Conectar el generador a circuitos o el cableado de su hogar debe hacerse por un electricista cualificado que le instale un interruptor de transferencia para evitar la retroalimentación.
- **Utilice cables de extensión para trabajo pesado,** resistente a la intemperie. Asegúrese de que los cables de extensión son libres de cortes o roturas y el enchufe tiene tres clavijas. Cables sobrecargados pueden provocar incendios o daños al equipo.
- **Asegurar su generador está correctamente conectado a tierra.**
- **Nunca sobrecargue un generador.** Un generador portátil sólo debe utilizarse cuando sea necesario para aparatos o equipos esenciales de alimentación.
- **Apagar todo el equipo alimentado por el generador antes de apagarlo.**
- **Mantenga el generador seco.** Ponerlo sobre una superficie seca bajo una estructura abierta.
- **Tener siempre un extintor de incendios completamente cargado.**
- **Nunca cargue un generador mientras esté en funcionamiento.**
- **Lea y siga las instrucciones del fabricante para un funcionamiento seguro.** Nunca corte las esquinas cuando se trata de seguridad.

Animamos a proteger el bienestar y la seguridad de su familia durante las interrupciones y proteger a quienes acudir en su ayuda durante situaciones de emergencia. Si su generador es que necesitan mantenimiento, póngase en contacto con victoria eléctrica, contamos con electricistas en personal que puede ayudar. Cuando trabajamos juntos para la seguridad y el bienestar de nuestras comunidades, todos nos beneficiamos.