

Sweet Treats at Boot Hill Bed and Breakfast Creating One-of-a-Kind Gifts for Every Occasion

Are you tired of getting your “special someone” the same thing for Valentine’s Day every year? Look no further than the Boot Hill Bed and Breakfast in Dodge City for a unique, custom-made gift.

“A few years ago we started making gift baskets filled with homemade goodies,” said Enid Scadden, owner of Boot Hill Bed and Breakfast. “It has really taken off during the Christmas season and we would like to let everyone know that we make baskets for every holiday and any special event such as birthday’s or anniversaries.”

Gift baskets can be tailored to your needs and your budget. Scadden has many options from which to choose, including, toffee, choco-

lates, and other goodies. She also takes special requests.

“We can do anything,” Enid said. “This past Christmas, I made several hundred gift baskets and shipped them all over the country. For those who are too busy to find a gift and get it shipped, we can custom make delicious baskets and they don’t have to worry about anything.”

In addition to baskets for all occasions, Boot Hill Bed and Breakfast also bakes a variety of different foods such as cakes, cookies, special request items, and offers catering services, on-site and off. The backyard of the Bed and Breakfast was host to several weddings over the summer, and is available upon request.

“Our catering business is

quite diverse.” Enid said. “We cater everything from weddings to family gatherings. If you have family coming from out-of-town, we can make and deliver the meal to your house. Some clients request “freezer-ready” meals. It’s a great option for the elderly or a businessperson too busy to cook. They get great homemade food that just needs to be taken out of the freezer.”

Next time you have a special event and need a cake—birthday, holiday, anniversary gift—or need lodging for family, friends or guests, keep Boot Hill Bed and Breakfast in mind. They offer great food and offer a quaint, unique lodging experience.

If you are interested in staying at Boot Hill Bed and Breakfast or in ordering a special gift or meal, contact Kurt or Enid at 620.225.0111 or visit their website at boothilldodgecity.com.



Above: The Boot Hill Bed and Breakfast is located at 603 W. Spruce Street in Dodge City. Below: Enid Scadden with her Valentine baskets.



Manager’s Message Continued from 16A

tion resources. One of the rules is aimed at reducing nitrogen oxides (NO_x) and sulfur dioxide (SO₂) emissions that, once released, drift to eastern U.S. states. The NO_x upgrade alone is a \$22 million project, with other upgrades costing more depending on EPA regulations.

Another EPA rule reduces the number of hours that smaller, city-owned generators can operate and may result in some of these municipal generating units being totally shut down. We rely on these generating units during peak energy demand or emergencies, so we will be required to build new generation or seek energy elsewhere to replace the lost municipal generation.

With each of these individual environmental regulations comes astronomical costs to install technology that gains minimal efficiency. Unfortunately, the cost of these requirements impact each of us through higher electric rates.

How much can I expect my electric bills to increase?

Assuming that your usage stays the same, the answer depends on the many variables that impact the wholesale cost of electricity. Transmission projects and equipment needed to meet environmental requirements, including those mandated by the EPA, are contributors to wholesale rates. An additional piece of the wholesale rate fluctuates each month depending on the cost of fuel and market prices for purchased power.

What is Victory Electric doing to keep my costs as low as possible?

The mission of Victory Electric is to provide you with reliable energy at the lowest possible price, while protecting the environment. We know any rate increase affects you, and we continually strive to keep costs as low as possible. For this reason,

we carefully weigh each decision on those expenditures within our control and continue to advocate on your behalf to minimize cost impacts imposed by the government. We have also made energy efficiency information available on our website to assist you with energy usage decisions.

Reliable, affordable energy is essential to the way of life we value and for sustained economic growth in our region. With that in mind, Victory Electric and our partners work diligently to protect you and approximately 400,000 other Kansans served by the cooperative system.

We encourage you to take action and contact your elected officials to voice your concern about the EPA environmental regulations and how it impacts your electric bill. We need fair and reasonable environmental regulations that protect the environment as well as the well-being of consumers across the nation.

Til Next Time, TJ

A Touchstone Energy® Cooperative
P.O. Box 1335, 3230 N. 14th Ave.
Dodge City, KS 67801
620-227-2139
www.victoryelectric.net

THE VICTORY
ELECTRIC COOPERATIVE

electronews



The Victory Electric Cooperative, Inc.

Board of Trustees

Richard Lightner
President
Kenny Wehkamp
Vice President
Carl Hubbell
Secretary/Treasurer
Jim Imel
Trustee
Max Jantz
Trustee
John Leis
Trustee
Loren Ochs
Trustee
Pat Morse
Trustee
Ken Schulte
Trustee
Cedric Drewes
Trustee
Daryl Tieben
Trustee
Randy Quint
Trustee

Staff

Terry Janson
General Manager
Karla Durrant
Mgr of Finance and Administration
Tom Lowery
Director of Operations
Ryan Miller
Supervisor of Operations
Greg Underwood
Manager of Engineering
Jerry King
Marketing and Communications
Monica Lampe
Human Resources
Jerri Imgarten
Editor

FROM THE MANAGER

Advocating for Fair and Reasonable Rates

Over the last few decades, electric consumers have experienced relatively stable power costs, especially when compared to other goods and services we routinely purchase. Many of you may have heard the news media broadcasting upcoming changes in power costs, primarily due to new governmental regulations from the Environmental Protection Agency (EPA), in addition to other price drivers that affect our industry. However, many events, some completely out of our control, suggest that rates will be increasing. With that in mind, our goal is to address the questions related to recent news that are probably foremost on your mind.

I have heard my electric bill will increase. Is this true, and if so, why?

The short answers are “yes” and “for several reasons.” The longer answer is much more complicated, but we will try to be as brief as possible.

As a member-owner of Victory Electric, you not only own the distribution cooperative but you also own wholesale generation and transmission services. In many ways, owning these assets is analogous to owning a home: maintaining it properly requires upgrades and repairs on a regular basis.

In addition to scheduled outages on generating units and transmission lines for routine maintenance, other “home improvement projects” include the construction of transmission projects. This is necessary for the continued delivery of reliable power as the demand for electricity on the nation’s electrical system grows.

Secondly, recent environmental regulations will result in increased generation costs. To meet the new requirements, expensive additional emission control equipment must be installed. In initial drafts of the new regulations, Kansas was not affected, but at the final ruling in July 2011, much to our surprise, we were required to comply on extremely short notice. These new standards require us to do costly upgrades on our genera-

Continued on page 16-F



Terry Janson

“However, many events, some completely out of our control, suggest rates will be increasing.”

dodge city
AREA CHAMBER OF COMMERCE
presents
Bill Cosby
Saturday, February 25th • 8:00 p.m.
United Wireless Arena • 4100 W Comanche • Dodge City, KS
special thanks to the following sponsors...

Get your tickets today!
Go to www.ticketmaster.com or contact the Arena Box Office at 620.371.7849

Black Hills Energy
UNITED WIRELESS
Dodge City Medical Center
National Beef
Western Plains Medical Complex

Mark Your Calendars

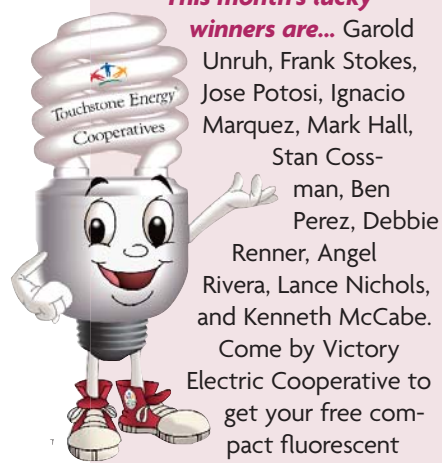
| April 2012 | | | | | | |
|------------|----|----|----|----|----|----|
| S | M | T | W | U | F | S |
| 1 | 2 | 3 | 4 | 5 | 6 | 7 |
| 8 | 9 | 10 | 11 | 12 | 13 | 14 |
| 15 | 16 | 17 | 18 | 19 | 20 | 21 |
| 22 | 23 | 24 | 25 | 26 | 27 | 28 |
| 29 | 30 | | | | | |

The 67th Annual Meeting of Victory Electric has been scheduled for April 10 at the Dodge City Civic Center.

A meal will be served and everyone attending will have a chance to win some great door prizes.

Stay tuned for more details on the upcoming annual meeting.

CFL Charlie Says "Come Get Your Free CFL!"



This month's lucky winners are... Garold Unruh, Frank Stokes, Jose Potosi, Ignacio Marquez, Mark Hall, Stan Cossman, Ben Perez, Debbie Renner, Angel Rivera, Lance Nichols, and Kenneth McCabe. Come by Victory Electric Cooperative to get your free compact fluorescent light bulb (CFL). Every month Victory Electric will be giving members free CFL light bulbs. Congratulations winners!

New "Cars" Drive Power Costs

A new car arrives with fresh paint, a great smell, and a hefty price tag. After a few years of regular payments the scent changes, but there's value in owning an older car that's still running well.

Most of America's electric cooperatives bought a fleet of new "cars"—power plants—in the 1970s and 1980s. This ample stock of generation allowed co-ops to maintain a safe, reliable and affordable supply of power. Current conditions may place affordability and reliability at risk.

Half of the nation's total generating capacity—530,000 megawatts—passed the 30-year mark by the end of 2010, according to the U.S. Energy Information Association (EIA). As with an older vehicle, there are costs associated with maintaining a power plant—expenses compounded by a slew of environmental regulations. In fact, these rules could result in a chunk of America's coal-fired power plant fleet shutting down by 2018.

In addition, some co-ops need to head back to the dealership to add new generation plants to meet growing demand. However, with required environmental controls coupled with rising prices for construction materials, new power plants—as well as older ones "in for maintenance"—are going to be much, much more

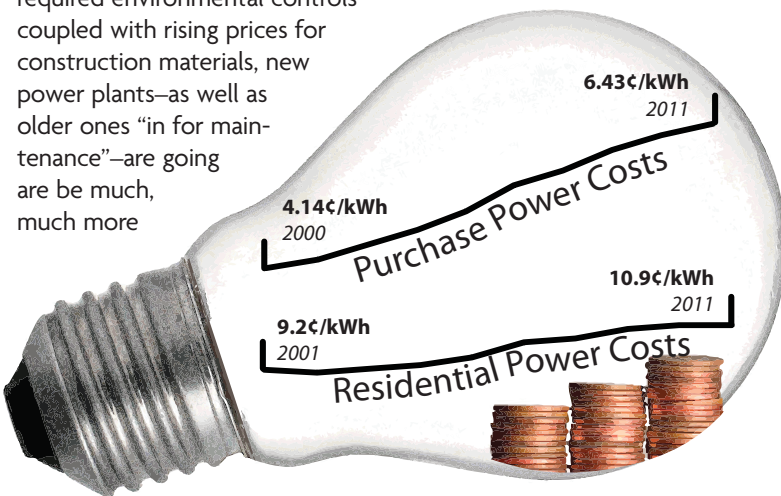
expensive.

All of these factors will impact our electric bills for many years to come. Our collective wallets are under pressure. More folks around the world are using power; China has surpassed the United States as the top global energy user, and in just over two decades it's predicted to consume 68 percent more power than we do. Americans are using more energy too, despite efficiency measures. It's easy to see why—TVs, laptops, "iGadgets," and other electronics crowd power outlets. A typical Kansas home uses 985 kWh every month—a 50 kWh increase in just one year.

Generally, when there's increased demand—say, for the latest model car—manufacturers open a new assembly plant to roll more models into showrooms. But at a time when electricity needs are rising, our affordable power supply is beginning to dwindle.

Today, nearly 80 percent of the power provided by electric co-ops nationwide comes from coal, compared to about half for the rest of the electric utility industry.

Continued on page 16-D



This chart shows that while purchase power costs (wholesale prices) have increased significantly, residential power costs have remained relatively steady over the past 10 years for Victory Electric members.

Nuevos "Coches" Manejan el Costo de Energía

Un coche nuevo llega con pintura fresca, con un gran olor y un precio alto. Después de algunos años de pagos regulares el olor cambia, pero hay valor en poseer un coche antiguo que aún está funcionando bien.

La mayoría de las cooperativas eléctricas de Estados Unidos compró una flota de coches en la década de los 1970 y 1980. Esta amplia acción de generación permite que cooperativas mantengan un suministro seguro, confiable y asequible de energía. Las condiciones actuales pueden colocar rentabilidad y fiabilidad en riesgo.

La mitad total de la nación, esta generando una capacidad 530,000 megavatios—pasó la marca de 30 años a finales de 2010, de acuerdo con los Estados Unidos. Energy Information Association (EIA). Como en un vehículo antiguo, hay gastos asociados con el mantenimiento de una planta de energía—gastos que agravan una serie de normas del medio ambiente. De hecho, estas normas podría resultar un trozo de flota de planta de energía de Estados Unidos de carbón cerrando en el 2018.

Además, algunas cooperativas necesitan volver al concesionario para agregar plantas de nueva generación para satisfacer la creciente demanda. Sin embargo, con los requisitos junto con el aumento de los precios de materiales de construcción, nuevas plantas así como viejas "en mantenimiento" va ser mucho, mucho más caro.

Todos estos factores afectarán nuestras facturas eléctricas en años venideros. Nuestras carteras colectivas están bajo presión. Más gente alrededor del mundo está utilizando energía; China ha superado a Estados Unidos como el usuario de energía global superior, y en poco más de dos décadas se predice que consumirá, 68 por ciento de energía mas que nosotros. Los estadounidenses están utilizando más energía, a pesar

de las medidas de eficiencia, es fácil ver por qué—televisores, ordenadores portátiles,

"! Aparatos" y otras salidas de alimentación electrónica. Una casa típica de Kansas USA 985 kWh cada mes—a 50 kWh aumenta en sólo un año.

Generalmente, cuando se incrementa por decir la demanda, para los fabricantes de coches de último modelo abrir una nueva planta de ensamblaje para poder rodar más modelos en salas de exposición. Pero en un momento cuando aumentan las necesidades de electricidad, nuestra fuente de alimentación económica está empezando a escasear.

Hoy, casi 80 por ciento de la energía proporcionada por cooperativas eléctricas a nivel nacional proviene del carbón, en comparación con aproximadamente la mitad del resto

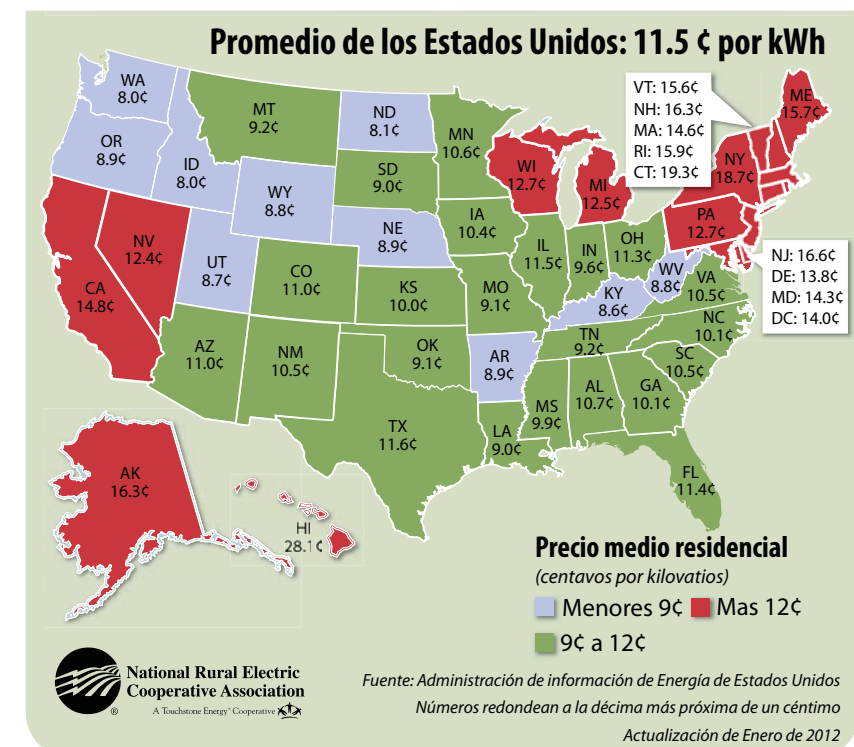
de la industria eléctrica. ¿Por qué la diferencia? La mayoría de plantas de energía de carbón las cooperativas fueron construida entre 1975 y 1986, cuando la construcción de instalaciones de gas natural fue restringida por el federal Powerland and Industrial Fuel Act debido a las preocupaciones que a la reserva natural estaba bajo. Por supuesto, esas preocupaciones demostraron para ser infundados, y la ley fue revocada en 1987. Para entonces cooperativas ya habían construido una generación de plantas centrales las mismas de carbón que ahora están siendo sobrecargadas con elevados costos regulatorios.

Victory Electric no está en contra de limpia y energía verde. De hecho, generación y cooperativas de transmisión como Sunflower Electric, que nos provee energía por

Continúa en la página 16-D

Precios promedio de la electricidad residencial

Figuras de 2010, en centavos de dólar por kWh



Bill Payment Options



Pay your bill online at www.victoryelectric.net, at our office or by mail or at any of our pay stations.

Victory Electric has several convenient options for you, the member, to pay your bill.

In addition to paying in our office or by mail, options include online bill pay at www.victoryelectric.net, drop boxes at Victory Electric and City of Dodge City, and a pay station at Mr. Payroll, 400 E Wyatt Earp.

Visit our Website & Join us on Facebook



Visit our website at www.victoryelectric.net. On our website, you will find a calendar of events, frequently asked questions, bill pay and energy calculators—just to name a few tools!

You can also become a fan of Victory Electric on Facebook at facebook.com/VictoryElectric or by searching for The Victory Electric Cooperative Assn., Inc. Check our page for updates, outage information and energy efficiency tips. Facebook is a great way to stay in touch.

Nuevos "Coches" Manejan el Costo de Energía

Continuación de la página 16-C
mayoreo, ha invertido millones de dólares en energía verde limpiar las inversiones de carbón. Pero nosotros queremos asegurarnos de que los legisladores en Washington, D.C. mantienen equilibrio, sentido común y asequibilidad en mente al agregar capa tras capa de requisitos a la forma en que generamos energía.

Trabajar con la gente en nuestro brazo de servicio nacional,

New "Cars" Drive Power Costs

Continued from page 16-C
Why the difference? The majority of co-op coal power plants were built between 1975 and 1986, when building natural gas facilities was restricted by the federal Powerplant and Industrial Fuel Use Act due to concerns that natural gas reserves were running low. Of course, those worries proved to be unfounded, and the law was repealed in 1987. But by then co-ops had already built a generation of coal-fired power plants—the same plants that are now being saddled with heavy regulatory costs.

Victory Electric is not against clean and green energy. In fact, generation and transmission cooperatives like Sunflower Electric, which supplies us with wholesale power, has invested millions of dollars green energy and clean coal investments. But we want to make sure

National Rural Electric Cooperative Association (NRECA) Victory Electric está instando a la protección de Ambiental U.S.

Agencia a considerar un enfoque más equilibrado y sentido común a las normas, y cómo los costos de energía eléctrica mayor afecta a los consumidores. Quedes informado sobre estos temas en cómo puede ayudarnos a mantener el precio de la energía asequible en www.ourenergy.coop.

lawmakers in Washington, D.C., keep balance, common sense, and affordability in mind when adding layer upon layer of requirements to the way we generate power.

Working with the folks at our national service arm, the National Rural Electric Cooperative Association Victory Electric is urging the EPA to consider a more balanced and common-sense approach to rules, and how increased electric power costs affect consumers. Stay informed on these issues and find out how you can help us keep the price of power affordable at www.ourenergy.coop.

Average Prices for Residential Electricity

2010 figures, in cents per kWh

