

## 3rd Annual Victory Electric **Health Fair**



We invite **everyone** to join us

**Saturday, October 16, 2010 • 8 a.m. to 12 p.m.**

Victory Electric Cooperative at 3230 N. 14<sup>th</sup> in Dodge City

*Parking will be available at the Catholic and Southern Baptist churches, and a shuttle service will be available.*

- More than 50 doctors, health care professionals, and vendors
- \$15 flu shots  
*There are 300 flu shots available, first come first served. This is the H1N1 flu shot.*
- \$10 complete blood screens  
*If you would like a lipid profile, please fast after midnight on October 15 for test accuracy. You must be 18 years of age.*
- Prostate evaluations
- Skin cancer screenings
- Spinal screenings
- Blood pressure checks
- Vision checks
- Pap Smears
- Hearing tests
- And much more



**Health Fair sponsored by:** Victory Electric, Dodge City Public Schools, Western Plains Medical Complex, Dodge City Medical Center, Cargill, Dodge City Community College, Phillips Chiropractic, Mexican American Ministries, Dodge City Public Library, Ambucs, Peterson Labs, among others.

## 4<sup>th</sup> Annual **Pumpkin Painting and Carving Festival**

Sponsored by Victory Electric and  
Dodge City Community College

**October 30, 2010  
9 to 11 a.m.**

**Victory Electric**  
(3230 N. 14<sup>th</sup> Ave, Dodge City)

Pumpkin and kits will be provided free of charge.  
Children must be accompanied by an adult.  
**Reservations are required.**  
**Please call 227-9399 to reserve your spot.**  
Ages 13 and under.



A Touchstone Energy® Cooperative  
P.O. Box 1335, 3230 N. 14<sup>th</sup> Ave.  
Dodge City, KS 67801  
620-227-2139  
www.victoryelectric.net

THE VICTORY  
ELECTRIC COOPERATIVE

**electronews**



### The Victory Electric Cooperative, Inc.

#### Board of Trustees

- Richard Lightner**  
President
- Kenny Wehkamp**  
Vice President
- Carl Hubbell**  
Secretary/Treasurer
- Jim Imel**  
Treasurer
- Max Jantz**  
Trustee
- John Leis**  
Trustee
- Loren Ochs**  
Trustee
- Milam Jones**  
Trustee
- Pat Morse**  
Trustee
- Ken Schulte**  
Trustee
- Cedric Drewes**  
Trustee
- Daryl Tieben**  
Trustee

#### Staff

- Terry Janson**  
General Manager
- Karla Durrant**  
Mgr of Finance and Administration
- Tom Lowery**  
Director of Operations
- Ryan Miller**  
Supervisor of Operations
- Greg Underwood**  
Manager of Engineering
- Jerry King**  
Marketing and Communications
- Monica Lampe**  
Human Resources
- Jerri Imgarten**  
Editor

### FROM THE MANAGER

## Welcome to your hometown co-op

Our community has changed over the years. You may remember as a kid buying groceries and hardware at mom-and-pop stores—most are now long gone, driven out by national retailers.

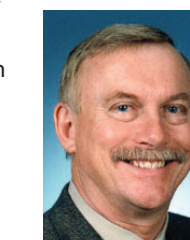
It seems everything's today has become a bit generic, focused more on profits than people. Yet it's nice to know we still have locally owned and controlled businesses we can count on—such as The Victory Electric Cooperative.

Every October since 1930, not-for-profit cooperatives of all stripes have celebrated Cooperative Month. During this time, it makes sense to highlight the qualities that make electric cooperatives different from other types of utilities and businesses.

For starters, co-ops are owned by those they serve. That's why by receiving electricity from Victory, you're a member—an owner, really—of the business. Without members, there would be no Victory Electric.

Members maintain democratic control of our co-op, which means they elect fellow members to represent them on the board of directors/trustees every April at our annual meeting. We also return margins (profits) to our members in the form of capital credits. One principle that sets us apart from other businesses

*Continued on page 16-D ▶*



Terry Janson

**That's why  
by receiving  
electricity  
from the  
co-op,  
you're a  
member...**



### CFL Charlie Says

## "Come Get Your Free CFL Bulb!"

And this month's lucky winners are... Steve Tucker, Maria Del Real, Doyle Koehn, Kent Powell, Janan Dejesus, Laverne Eichman, Velia Nieto, Joshua Oldfather, and Gilbert Ackerman.

Come by Victory Electric, talk to Josh or Jerry, and get your free compact florescent light bulb (CFL).

Every month Victory Electric will be giving free CFL light bulbs.

**Congratulations winners!**

### Non-Domestic Bills Mailed in November

Victory Electric will read the meters in October for the fence chargers and small watering loads (among other small rural electric loads), which we classify as non-domestic services.

These bills are mailed annually and consist of the kilowatt-hours consumed in the previous year from November 2008 to October 2009.

If you have any questions or problems with any of these billings, come by or call us at 800-279-7915.

### Bill Pay Options

Victory Electric has several convenient options for you, the member, to pay your bill. In addition to paying in our office or by mail, options include online bill pay at [www.victoryelectric.net](http://www.victoryelectric.net), drop boxes at Victory Electric and City of Dodge City, and two pay stations. These pay stations are Mail n More at 1811 W Wyatt Earp, and Mr. Payroll at 400 E Wyatt Earp.



## Victory Completes Safety Audit

Over the past year, Victory Electric has been working diligently to ensure our premises, trucks and equipment are up to safety standards and our workers are following proper safety procedures. In August, Victory Electric had a safety audit performed by Larry Detwiler, Loss Control, Safety and Compliance at Kansas Electric Cooperatives, and the Safety Accreditation Observation Team.

The goals and mission of the Safety Accreditation Program are:

- ▶ To preserve life and to prevent injury.
- ▶ To establish highest quality safety and loss control standards and promote concepts that enhance system operation.
- ▶ To inform and educate management about these safety and loss control concepts.
- ▶ To recognize accredited systems and management that meet these standards.

General Manager, Terry Janson, received the following letter from Detwiler, recognizing Victory Electric for its work and commitment to the program.

*I am writing this letter on behalf of the Safety Accreditation Observation Team that conducted*

*your safety audit on August 18, 2010.*

*We would like to personally recognize the outstanding effort of the staff of Victory Electric Cooperative in preparation for the cooperative's renewal in the Safety Accreditation Program.*

*The work conducted by the inside and outside personnel, and their willingness to work together, shows that when a spirit of cooperation is used, there are no limits to what can be accomplished.*

*The Observation Team would also recommend that this monumental effort be recognized not only to the Board of Trustees, but also to the membership of Victory Electric Cooperative.*

*The staff's efforts not only makes for a safer workplace, but also benefits the cooperative in having employees who are professional, concerned in limiting the liability to the cooperative, and whose pride in workmanship ensures system reliability.*

*Again, congratulations on an outstanding job. Keep up the exceptional work!*

*Very truly yours,  
Larry E. Detwiler, Director  
Loss Control, Safety & Compliance  
Department*

## New Employee

### Victory Hires Manager of Electrician Services

A new employee came on board at Victory Electric last month as Manager of Member Services. **Stewart Whitaker**, formerly from Bristol, TN, is now in charge of the Victory Electrician Services. He will be responsible for managing the staff of electricians, booking jobs, billing jobs, and vari-

ous other tasks.

Whitaker is married to Candace, has two sons, Nathaniel and Curtis and one daughter, Ericka.

So if you are in the area, stop by and say hello, or if you are needing electrician services, feel free to stop by or call 620-371-7731 or 800-279-7915.

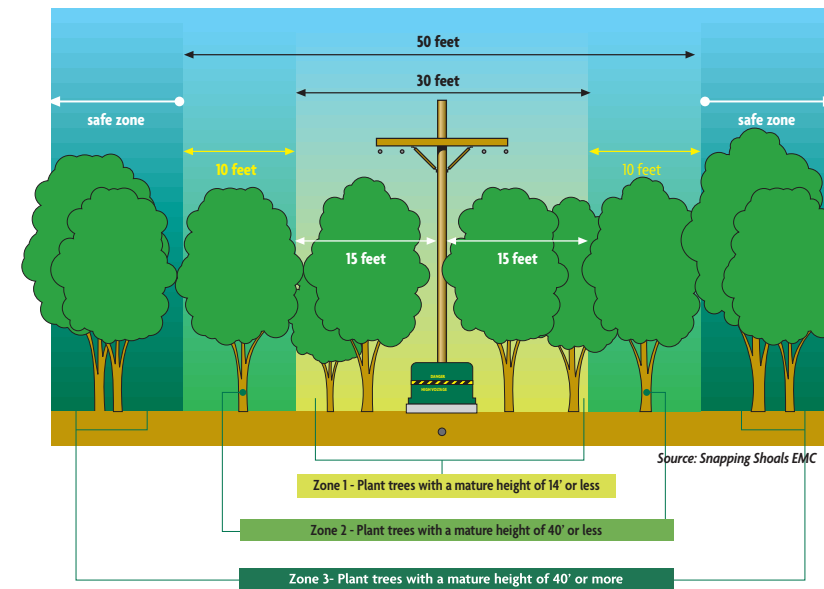
## Planting the Right Tree in the Right Place

There are many environmental and beautification benefits to planting young trees. However, Victory Electric wants to remind everyone to be aware of electrical hazards while planting this year.

Trees that grow too close to electric lines can create shock and fire hazards as well as power outages. More importantly, children can become victims of electric shock when they climb trees that have grown too close to the power lines as well. Trees growing into power lines can also create electrical hazards for people who might be trimming branches, hanging lights or otherwise working around them.

Trees provide many aesthetic, environmental and economic benefits. Everyone needs to be aware of the dangers and risks created when trees grow into power lines, and the importance of calling 811 for Kansas One Call before beginning any landscaping project.

Take the time to research tree selections by consulting your local arborist, tree nursery or utility. These experts can provide assistance in



designing a beautiful, shade-filled yard with trees appropriate for each area of the landscape. With their help, trees can provide economical cooling in the summer, and a wind-break for harsh winter winds.

In addition, trees help combat the effects of pollution by absorbing carbon dioxide (CO<sub>2</sub>). When trees grow, they take energy from the sun and combine it with CO<sub>2</sub> from the air to photosynthesize. This makes trees a natural "carbon sink" or, a living source of carbon reduction. Some trees are better suited for this task than others

Zone 3—mature height of 40' or more				
American Elm			NW	SW
American Linden	C	E	NW	SW
Bald Cypress	C	E		SW
Bur Oak	C	E	NW	SW
Catalpa			NW	
Chinkapin Oak			NW	SW
Colorado Blue Spruce			NW	
Easter Redcedar			NW	
Ginkgo	C	E		SW
Hackberry	C	E	NW	SW
Honeylocust	C	E	NW	
Kentucky Coffeetree	C	E	NW	SW
Ponderosa Pine			NW	SW
Red Maple	C	E		SW
Sawtooth Oak	C	E	NW	SW
Southwestern White Pine		E	NW	SW

Preferred trees for central (C), eastern (E), northwest (NW) and southwest (SW) Kansas.

Zone 2—mature height of 40' or less				
Caddo Sugar Maple			NW	
Gallery Pear	C	E	NW	SW
Canada Red Cherry		E	NW	
Chinese Juniper	C	E	NW	SW
Goldenraintree	C	E	NW	SW
Lacebark Elm			NW	
Limber Pine	C	E	NW	
Littleleaf Linden			NW	
Osage Orange	C	E	NW	SW
River Birch			NW	
Trident Maple	C	E		SW
Western Soapberry		E		SW

and, according to the U.S. Department of Energy (DOE), tree species that grow quickly and live long are ideal carbon sinks.

Choosing the right tree for the right place is crucial, especially when it comes to power lines. Trees and wood in general can potentially conduct electricity and can create a safety hazard if grown close to electric lines. Power outages or momentary interruptions can occur when branches come into contact with overhead lines. Electrical arcing and sparking from a wire to a nearby branch can also cause fires.

Keep in mind expected height when you purchase trees to plant this year. Just because a tree is far from the power line right now, doesn't

*Continued on page 16-D ▶*

Zone 1—mature height of 14' or less				
Amur Maple	C	E		SW
Cockspur Hawthorne	C	E	NW	SW
Crabapple Species	C	E	NW	SW
Pinyon Pine	C	E	NW	SW
Redbud	C	E	NW	SW
Washington Hawthorne			NW	

## Hometown Co-op

*Continued from page 16-A ▶*

is our concern for community. As a cooperative, we have a special responsibility to support the areas in which our members live and work. From sponsoring a local school's baseball team to supporting new jobs and industry through our economic development efforts, we stand as a driving force in our community.

We want what you want—affordable energy bills and the comfort of knowing lights will turn on when you flip a switch. We work throughout the year to invest in our electric system and keep power reliable. We

focus on educating members how to use energy efficiently. We talk to you in the grocery store and on the street, listening to your concerns and ideas. Overall, co-ops are more



Victory Electric Headquarters

accessible than other types of businesses. We give our members a voice, and we are local—living and working alongside those we serve.

That's the cooperative difference.

*'Til Next Time, TJ*

## Cold Weather Rule:

### Effective Nov. 1 to March 31

Cooperative members who are unable to pay their electric bills during the cold weather period may qualify for this program, provided they fulfill certain good faith requirements when attempting to pay.

The requirements members must meet to qualify for the program are summarized below.

- ▶ Members must notify the cooperative and state their inability to pay their service bill in full.
- ▶ Members must apply to federal, state, local or other financial assistance programs for which they may be eligible to receive aid in paying utility bills.
- ▶ Members and the cooperative will reach a mutually agreeable payment

arrangement.

Please note that failure to follow the requirements, illegally diverting utility service, receiving service by tampering, or defaulting on a payment agreement, will disqualify you from receiving the benefits under the Cold Weather Rule.

In no event will the cooperative disconnect a service if the temperature is forecast to fall below 35° Fahrenheit, or be in the mid 30s or colder within 24-hours following the time of disconnection.

The Cold Weather Rule is to ensure human health and safety are not unreasonably endangered during the cold weather months.

If you have questions on the Cold Weather Rule, please contact Sandy at 620.227.2139.

## Planting Trees

*Continued from page 16-C ▶*

mean it always will be. If you have trees that appear to be growing into power lines, contact Victory Electric. Never try to prune them yourself.

To avoid future electrical hazards, safe planting tips to remember include:

- ▶ **Consider mature height of trees.** Never plant a tree near a power line that could grow within 25 feet of it. Tall growing trees should be planted a minimum of 20 feet away from power lines, and 50 feet away to avoid future pruning. A mature height of less than 15 feet is recommended for trees planted near power lines.
- ▶ **Do not plant near underground utility services.** Tree roots can grow to interfere with underground pipes, cables and wires. Future repairs to these facilities also could damage the health and beauty of nearby plants and trees, or even require removal.
- ▶ **Keep areas around electric meters, transformers or other electrical equipment free of any vegetation that could limit utility service access.**
- ▶ **Before digging,** call 811 for Kansas One Call to mark the location of underground utilities so that accidental contact, damage and injuries can be avoided.

There are many beautiful varieties of low-growing trees and shrubs that provide color, screening and shade, and enhance the quality of life in our communities and environment. Consider the types of trees that co-exist well with power lines and the environment to avoid the need for trimming for line clearance.

