

## THE VICTORY ELECTRIC CO-OP

# electronews



### The Victory Electric Co-op Assn., Inc.

#### Board of Trustees

**John Leis**  
President

**Pat Morse**  
Vice President

**Daryl Tieben**  
Secretary/Treasurer

**Cedric Drewes**  
Trustee

**Jim Imel**  
Trustee

**Gary Gillespie**  
Trustee

**Terri Larson**  
Trustee

**Richard Lightner**  
Trustee

**James Ochs**  
Trustee

**Randy Quint**  
Trustee

**Ken Schulte**  
Trustee

**Kenny Wehkamp**  
Trustee

#### Staff

**Shane Laws**  
CEO

**Amy Grasser**  
Manager of Corporate Services

**Angela Unruh**  
CFO

**Denzil McGill**  
Manager of IT

**Greg Underwood**  
Manager of Engineering

**Jerri Imgarten**  
Manager of Marketing and  
Communications

**Mikey Goddard**  
Manager of Safety and Plant

**Ryan Miller**  
Manager of Operations

**Tom Lowery**  
Manager of Special Projects

### FROM THE CEO

## The Dreaded Vampire Loads

Perhaps you are familiar with an undesirable aspect of the electronic and IOT (Internet of Things) revolution: vampire loads. Vampire loads come from devices that use electricity even when they appear to be off. The primary culprits are chargers, set-top television boxes, instant-on televisions and gaming systems. There are others, but these four represent the major offenders.

Let's look at how these vampire loads occur and why they are approaching 10 percent of average household electric use according to the Environmental Protection Agency.

Chargers take the 120 VAC (volts alternating current) power at the outlet and reduce it down to the voltage required by the connected device, usually 5 to 12 VDC (volts direct current). Obviously, when your device is charging, the charger is using electricity, but you might be surprised to learn that chargers still use small amounts of energy even when they're not connected to a device.

Television set-top boxes also consume energy when they appear to be inactive. Anytime the set-top box's lights are on, it is using power. Like chargers, they use more when the television is on, but they are always working—even when the TV is off. This is especially true for those devices with a DVR function that records your favorite TV shows.

The instant-on television is another culprit. The intention of the instant-on feature is instant gratification for the viewer, meaning no waiting for the TV to turn on and warm up. Unfortunately, for that convenience, the TV must be on at nearly full power. So, in this mode, it can be a real energy drain.

The typical gaming console can use as much energy as a regular refrigerator even when it's not being used. Make sure to check the console settings and disable automatic updates, which is where the energy drain comes from. Games on the console are frequently updated, which requires a lot of electricity.

So how does the average family combat these dreaded vampire loads?

You just need to change how you handle these energy-sucking electronics. Here are a few suggestions you should consider

- ▶ Unplug chargers when not in use.
- ▶ Invest in smart power strips. These look like normal power strips but have a twist; one of the outlets is the "master" that receives power all the time while the others are off. When the device connected to the master outlet turns on, the rest of the outlets receive power

**Continued on page 16-B ▶**



**Shane Laws**

## Bill Payment Options



Pay your bill online at [victoryelectric.net](http://victoryelectric.net), at our office, by mail or at any of our pay stations.

Victory Electric has several convenient options for you, the member, to pay your bill.

In addition to paying in our office or by mail, options include online bill pay at [victoryelectric.net](http://victoryelectric.net), via phone at 866-999-8494, auto bank deduction, drop boxes at Victory Electric and City of Dodge City.

## Come Get Your CFL!

*This month's lucky winners are...*

**ROGER DAY, LINDA FRIESS, FERNANDO GARCIA, RAFAEL MACIAS, MARIA OCHOA, SCOTT PRAY and RUTH REINERT.**

Come by Victory Electric's office to get your free compact fluorescent light bulb (CFL). Every month Victory Electric will randomly choose members for free CFL light bulbs. Congratulations winners!



## Tip of the Month

Switching to energy-efficient lighting is one of the fastest ways to cut your energy bills. By replacing your home's five most frequently used light fixtures or bulbs with LEDs, you can save \$75 each year.



## Time Changes Soon

Don't forget to change your clocks back one hour. Victory Electric reminds you that daylight savings time ends on Sunday, November 5.



# The Dreaded Vampire Loads

*Continued from page 16-A* ▶

too. Ingenious and perfect for entertainment set ups. Have the television in the master outlet and when you turn it on, the set-top box, speakers, streaming devices, etc. will turn on too. They are also ideal for PCs and their peripherals.

- ▶ Turn off the instant-on function on every household TV. Turn off set-top boxes that do not contain the DVR functionality or use a smart power strip.
- ▶ Disable automatic updates in gaming consoles and turn the

console completely off when you finish using it.

- ▶ When replacing any device or appliance, look for an EnergyStar rated product.

Vampire loads are a real problem that will only continue to grow as the digital age advances. But you can fight the vampires with vigilance and application of the recommendations above. For additional suggestions and energy-saving advice, visit your energy experts at [victoryelectric.net](http://victoryelectric.net).

*Thanks, Shane*

## Cold Weather Rule Begins Nov. 15

Members who are unable to pay their electric bills from Nov. 15 to March 15, may qualify for this program, provided they fulfill certain good faith requirements when attempting to pay.

The requirements members must meet to qualify for the program are summarized below.

- ▶ Members must notify the co-op and state their inability to pay their bill in full.
- ▶ Members must apply to federal, state, local or other financial assistance programs for which they may be eligible to receive aid.
- ▶ Members and the co-op will reach a mutually agreeable payment arrangement.

Please note that failure to follow the above requirements, illegally diverting utility service, receiving service by tampering, or defaulting on a payment agreement, will disqualify the member from receiving the



Cold weather rule begins Nov. 15.

benefits under the CWR.

In no event will the cooperative disconnect a service if the temperature is forecasted by the local National Weather Service to fall below 35 degrees, within 24-hours following the time of disconnection.

Victory Electric reserves the right to disconnect between 8 a.m. and 5 p.m. Monday through Friday when the temperature is at or above 35 degrees.

The CWR is to ensure human health and safety are not unreasonably endangered during the cold weather months.

If you have any questions, call our office at 620-227-2139 during business hours.

# Efficiency Trends Expected to Continue for Decades

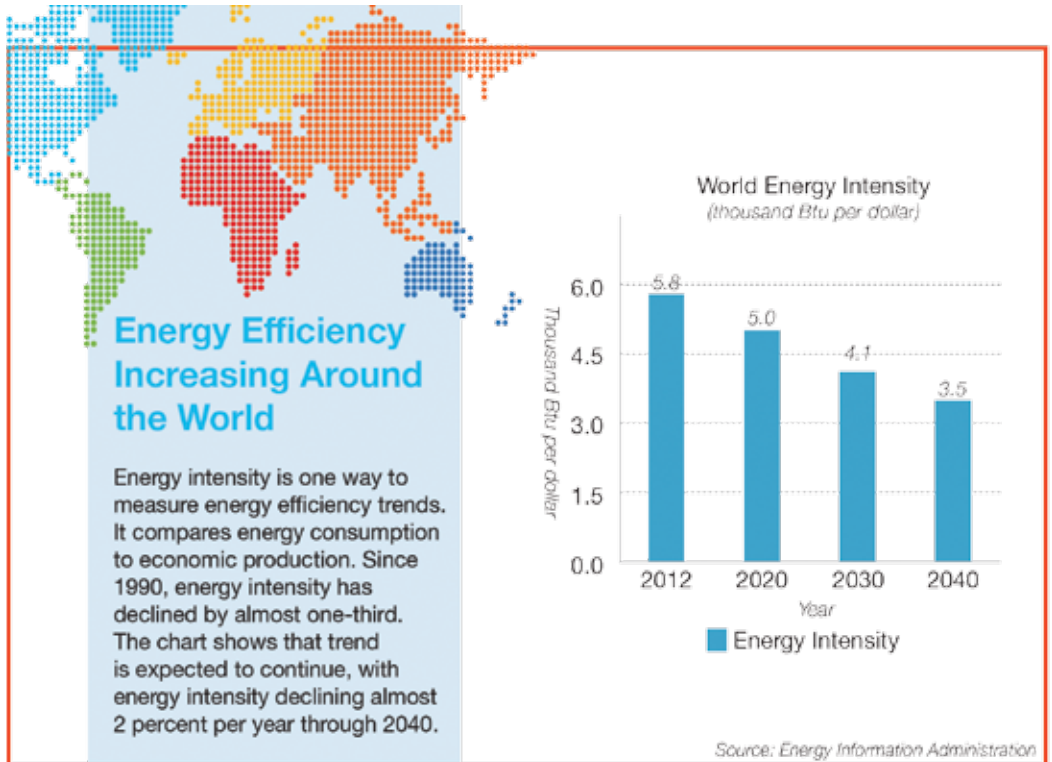
People aren't just talking about energy efficiency. It's actually happening across the globe — and there is a way to measure it. It's called energy intensity, and it is calculated by comparing energy consumption to the measure of a country's economic production—its Gross Domestic Product. In other words, energy intensity measures how much energy it takes to produce a dollar of economic activity.

In the past 25 years, energy intensity worldwide has dropped by one-third, says the U.S. Department of Energy's Energy Information Administration (EIA). There could be a lot of reasons for a decline in energy intensity: more efficient lighting options, energy use habits, standards for vehicle fuel economy and building codes, and economies based more on services and less on industrial production.

"Energy intensity has decreased in nearly all regions of the world," says EIA, "with reductions in energy intensity occurring both in the more developed economies ... and in the emerging nations."

EIA predicts energy efficiency will continue to improve.

The agency's International Energy Outlook forecasts that over the next 28 years studied in the report, world energy intensity will decline almost 2 percent a year, from 5.8 thousand British Thermal Units of energy for each



Since 1990, energy intensity has declined by almost one-third. That trend is expected to continue.

dollar of Gross Domestic Product in 2012, to 3.5 by 2040.

According to EIA, more economically developed countries tend to have lower energy intensities because they "have transitioned from relying on energy-intensive manufacturing to using more services-based economic activities which are less energy intensive."

EIA says that in 2015, developed economies used 12 percent less energy per dollar than developing countries.

For more energy efficient tips visit [victoryelectric.net](http://victoryelectric.net) or follow us on Facebook and Twitter. Energy efficient practices save you money. If you have any questions, call your Victory Electric energy experts at 620-227-2139.

## Mark Your Calendars for Nov. 27 Annual Parade of Lights and Chili Cook-off

The 2017 Parade of Lights and Chili Cook-off will be Monday, November 27.

Join us at Boot Hill Museum for chili sampling at 5:30 p.m., the Mayor tree lighting at 5:50 p.m., and the parade of lights at 6 p.m.

To enter the parade or a chili email Kennedy St. George, Victory Electric communications specialist, at [kennedy@victoryelectric.net](mailto:kennedy@victoryelectric.net).

For more information about the event call the office at 620-227-2139.

November 2017						
S	M	T	W	U	F	S
			1	2	3	4
5	6	7	8	9	10	11
12	13	14	15	16	17	18
19	20	21	22	23	24	25
26	27	28	29	30		

11th Annual  
**PUMPKIN**

**PAINTING AND CARVING**

*Festival*

AT VICTORY ELECTRIC COOPERATIVE

**SATURDAY, OCTOBER 28TH**

**9 A.M. – 11 A.M. | 800 PUMPKINS**

**PUMPKIN PAINTING AND CARVING**

**FACE PAINTING | GAMES | COSTUMES WELCOME**

**3230 N. 14TH AVE. DODGE CITY**

Join us for fall fun at the Pumpkin Painting and Carving Festival. Pumpkin and kits will be provided free of charge to the first 800 children ages 13 and under. All children must be accompanied by an adult.

Sponsored by Victory Electric Cooperative and Ladies Community Outreach